

! Contact our sales office for delivery dates and prices as this is a special model.

Specialized Product **P.G.** Point to Group information

# Coolant Valve: Aluminum Manifold

## SGC221-X510/SGC321-X510

Features

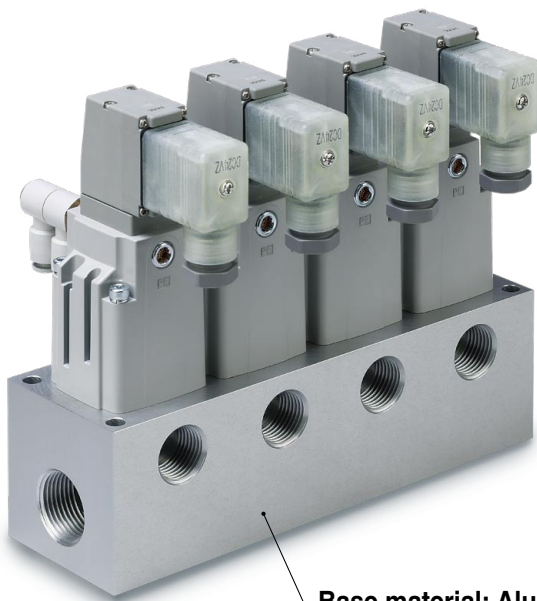
■ **Lightweight: 3.1kg**

\* SGC221A-1015Y-5DZ-04-X510

4-Station Manifold Valve Weight Comparison (When the valve is mounted)

Manifold material	Weight [kg]
<b>Aluminum alloy</b>	<b>3.1</b>
Iron	5.8

\* 4-station manifold valve/  
SGC221A-1015Y-5DZ-04-X510



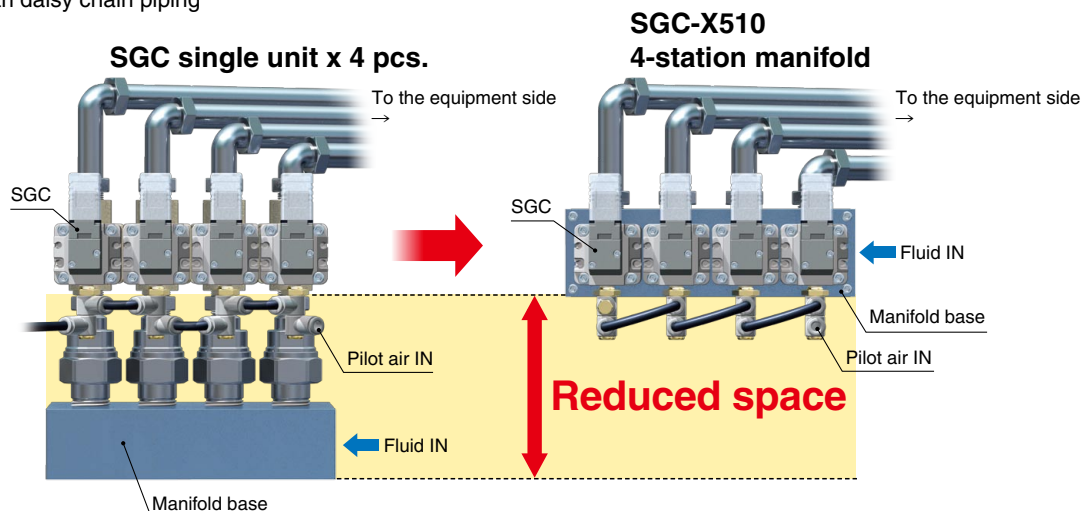
Pilot air port:  
With daisy chain piping

Base material: Aluminum alloy\*1

\*1 A compatibility evaluation of all coolants has not been performed for this product. Do not use coolants that contain chlorine or sulphur as they will corrode aluminum and the materials of the wetted parts.

■ **It is possible to save space and reduce piping labor/piping materials!**

\* Pilot air port: With daisy chain piping



**Caution**

To ensure the safest possible operation of this product, please be sure to thoroughly read the "Safety Instructions" in our "Best Pneumatics" catalog before use.

**SMC Corporation** 4-14-1, SOTO-KANDA, CHIYODA-KU, TOKYO 101-0021, JAPAN URL: <http://www.smcworld.com>

©2017 SMC Corporation All Rights Reserved



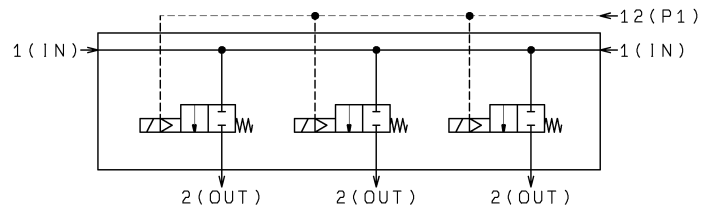
SP161X-011E  
P: VP

Ⓐ

## Specifications

Fluid	Coolant for cutting
Fluid temperature	-5 to 60°C (No freezing or condensation)
Ambient temperature	-5 to 50°C
Proof pressure	1.05 MPa
Operating pressure range	0 to 0.7 MPa
Pilot pressure range	0.25 to 0.7 MPa

Symbol



## How to Order

**SGC 2 21 A - 10 15 Y - 5 D Z - 04 - X510**

Series

2	SGC200
3	SGC300

Valve type

1	N.C.
---	------

Seal material

A	NBR
B	FKM

Thread type

Nil	Rc
N	NPT
T	NPTF

Port size

Symbol	1 (IN) port	2 (OUT) port	Series
10	1/2	3/8	SGC200
15	3/4	1/2	
20	1	3/4	SGC300

Stations

02	2 stations
03	3 stations
04	4 stations
05	5 stations

Light/surge voltage suppressor

Nil	None
S	With surge voltage suppressor
Z	With light/surge voltage suppressor

\* Refer to the standard product catalog for combinations with electrical entry.

Electrical entry

T	Conduit terminal
D	DIN terminal (Pitch between the terminals: 11 mm)
DO	DIN terminal without connector
W	M12 connector (4-pin type)
V	M12 connector (5-pin type)

\* The notes specified in the standard product catalog still apply. For details, refer to the standard product catalog.

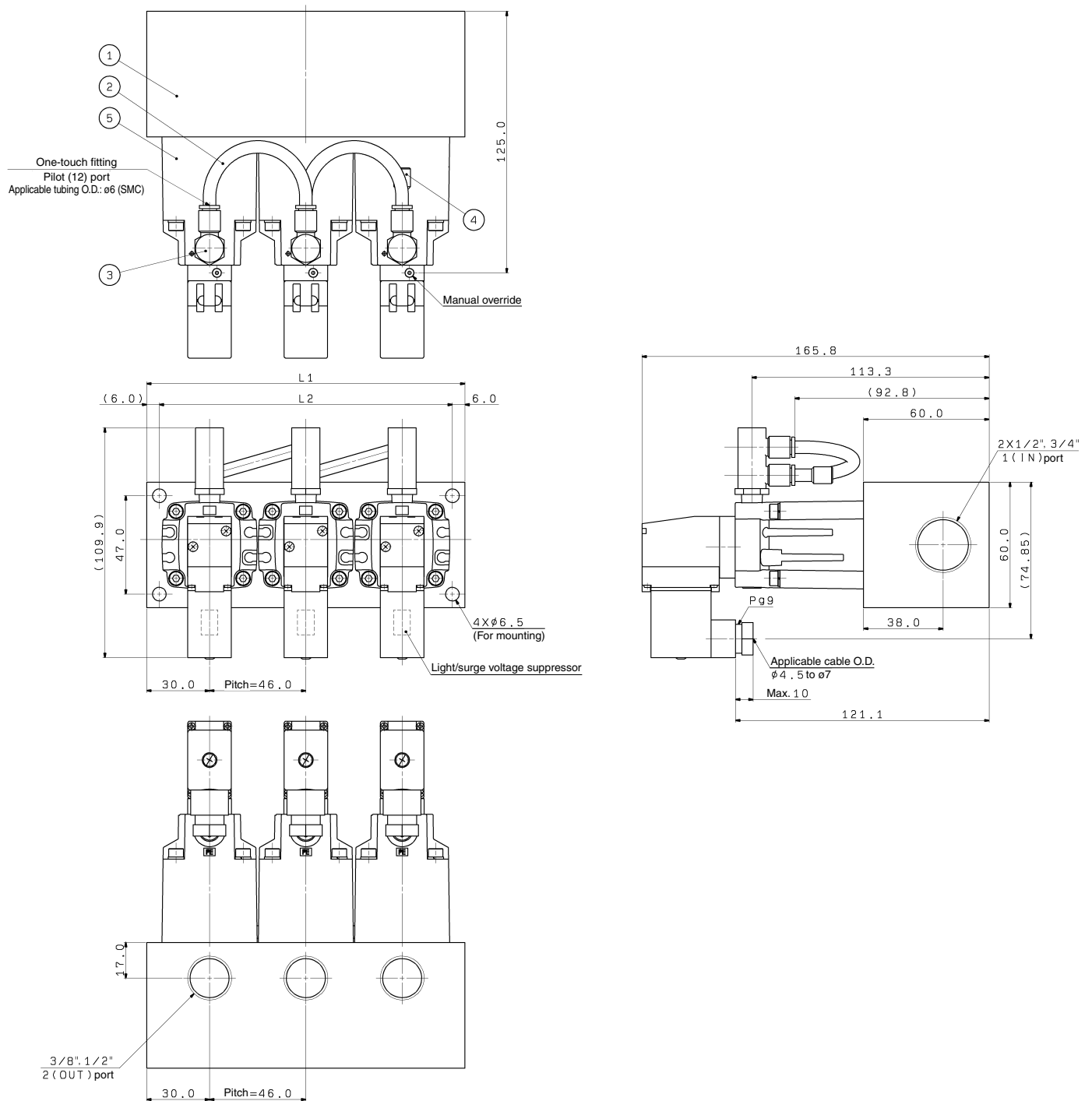
Rated voltage

1	100 VAC 50/60 Hz
2	200 VAC 50/60 Hz
3	110 VAC 50/60 Hz
4	220 VAC 50/60 Hz
5	24 VDC
6	12 VDC

**Dimensions**

[mm]

**SGC221-X510**



**L: Dimensions**

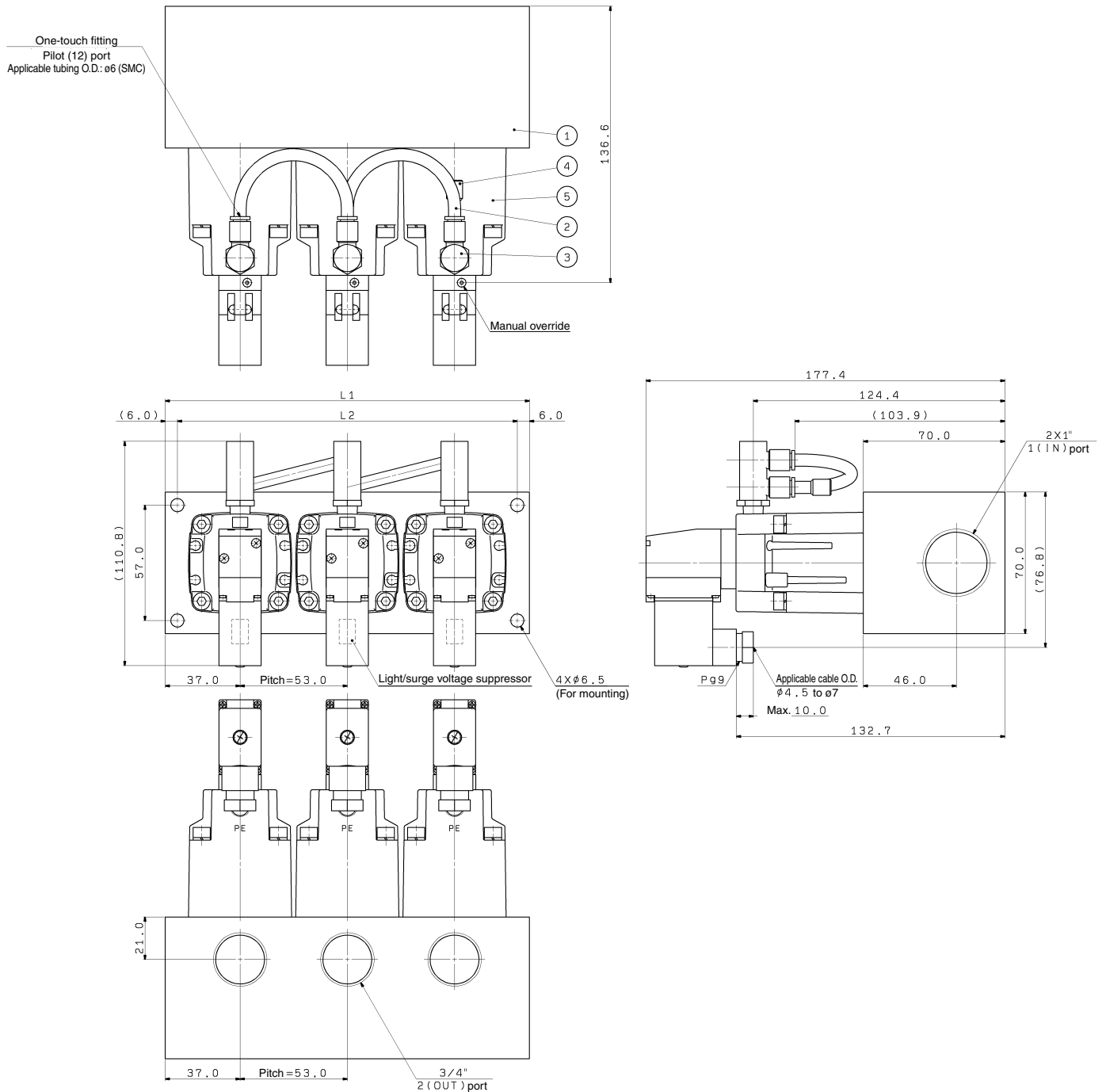
n: Stations

L \ n	2	3	4	5
<b>L1</b>	106	152	198	244
<b>L2</b>	94	140	186	232

**Dimensions**

[mm]

**SGC321-X510**



**L: Dimensions**

n: Stations

L \ n	2	3	4	5
L1	127	180	233	286
L2	115	168	221	274