



## Safety controller system 3 port solenoid valve/VG342 (R)-X87

SMC CORPORATION  
4-14-1, SOTO-KANDA,  
CHIYODA-KU,  
TOKYO 101-0021, JAPAN  
URL: <http://www.smcworld.com>

### ■ Features:

Safety standard ISO13849-1 for category 3 and 4\*

Dual residual pressure release valve with detection of main valve position.

- It is possible to detect the on/off positions of the main valves.

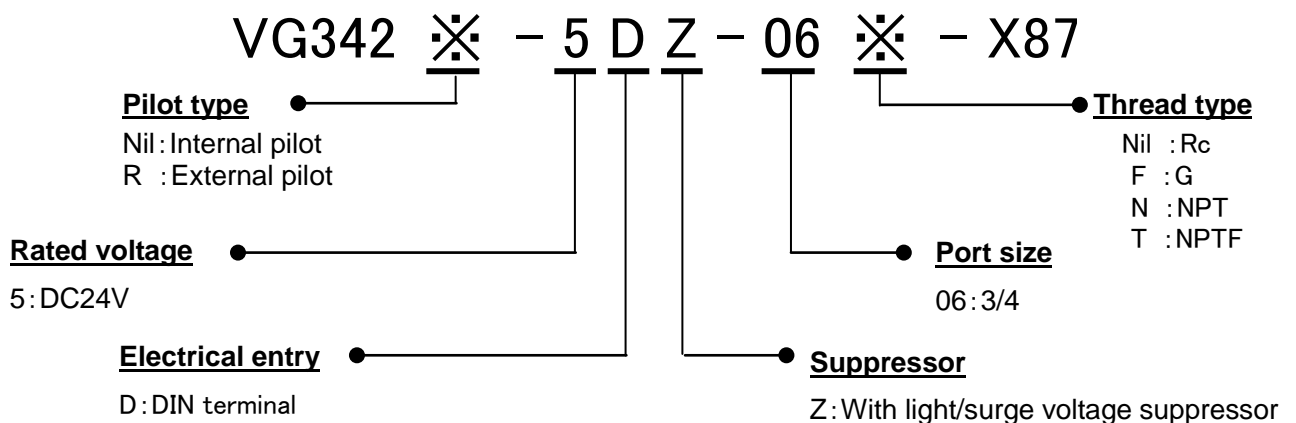


VG342-X87

Model	Application
VG342-X87	Safety standards ISO13849-1 Category 3 and 4 Compliant with performance level e

\* This product is component which is a part of a safety system and safety equipment is not guaranteed by this single unit alone.

### ■ How to Order :



**■ Specifications:**  
**< Valve Specifications >**

	VG342-X87*	VG342R-X87
Fluid	Air	
Type of actuation	NC (Return spring)	
Operating pressure range	0.25 to 0.7MPa	
Operation	Internal pilot type	External pilot type
External pilot pressure	-	0.25~0.7MPa (Same as operating pressure)
Max.operating frequency	30 times/min.	
Min. operating frequency	1time/week	
Ambient and fluid temperature	-10 to 50°C (No freezing)	
Ambient	95%RH or less (No freezing)	
Lubrication	No required	
Shock/Vibration	150 / 50 m/s <sup>2</sup>	
Enclosure	IP40	
Operating environment	Indoors	
Weight	2.8kg	2.9kg
B10D (MTTFD Calculation)	900,000 times	

\* If there is not enough air supply at P port or the supply pressure for valves decreases to 0.25MPa or less of the min. operating pressure, the valves may not switch correctly. In this case, please utilize the external pilot type (VG342R-X87) and supply enough air pressure to the external port.

## <Fluid> \*

Operating pressure	1→2 (P→A) [L/min(ANR)]	2→3 (A→R) [L/min(ANR)]
0.25 MPa	3,800	5,200
0.5 MPa	7,400	9,400
0.7 MPa	10,000	13,000

\* These values are just for reference. (Flow rate changes with piping conditions)

## <Solenoid Specifications>

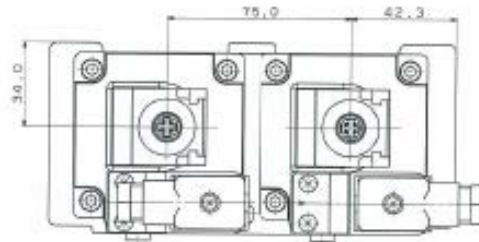
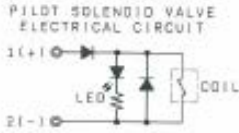
Electrical entry	DIN terminal
Rated voltage	DC24V
Allowable voltage Fluctuation	-15% to +10% of rated voltage
Power Consumption	2.2W
Suppressor	Light/surge voltage suppressor

## <Limit switch Specifications>

Electrical wiring	M12 connector
Contact resistance	50mΩ or less
Min. applicable load	DC5V 1mA (Load resistance)
Max. Voltage	DC24V
Max. load current	50mA
Max. load inductance	0.5H
Insulation voltage	300V
Protection against electric shock	Class II (EN60947-5-1:2004)

# ■ Dimensions: mm

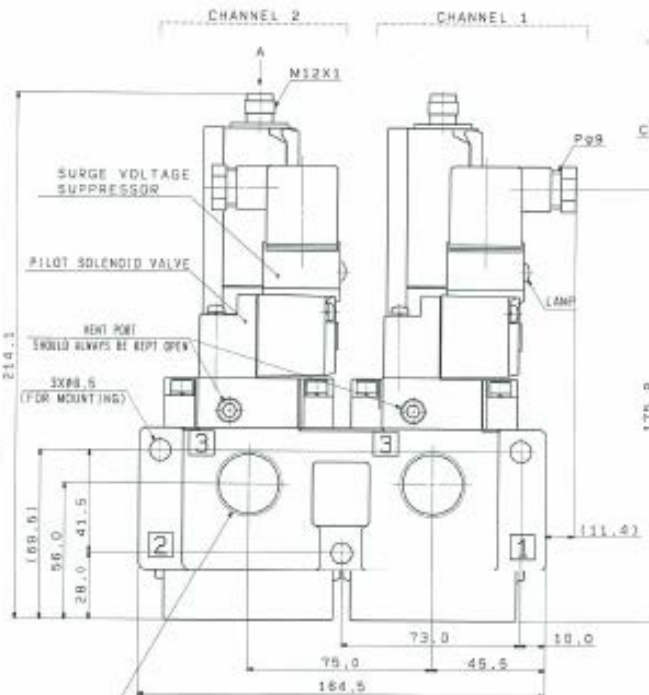
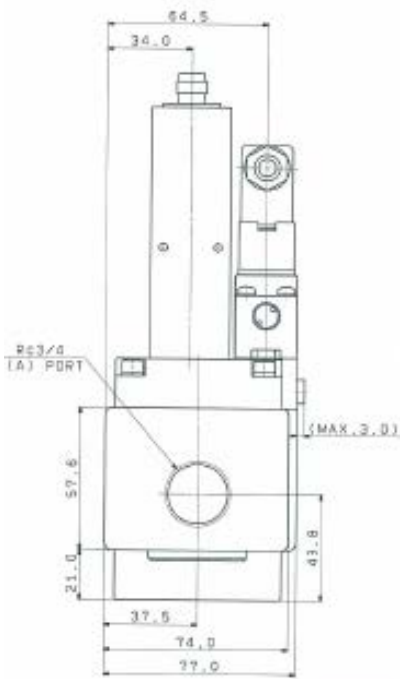
## ◇ VG342-X87



MODEL No.  
VG342-502-068-X87

THREAD TYPE  
N1: Rc  
F : G  
N : NPT  
T : NPTF

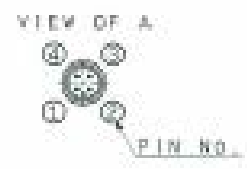
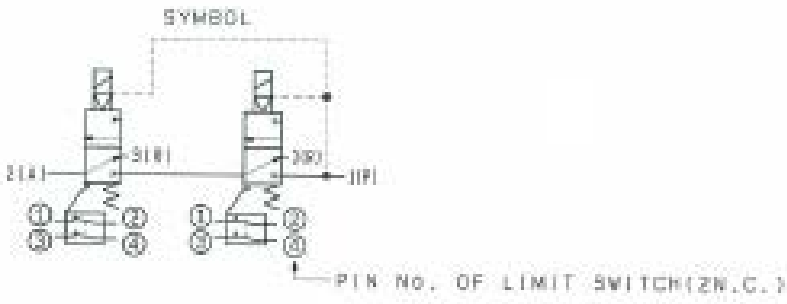
RATED VOLTAGE



LIMIT SWITCH (MADE OF OMRON LTD MODEL No. J04N-9B3J)



2KRCS/4(3R) PORT SHOULD ALWAYS BE KEPT OPEN



**⚠ Caution** To ensure the safest possible operation of this product, please be sure to read thoroughly the "Safety Instructions" in our "Best Pneumatics" catalog before use.