

Compact Cylinder/Axial Piping: Double Acting, Single Rod

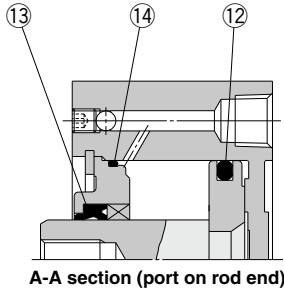
CQP2 Series

ø12, ø16, ø20, ø25
ø32, ø40, ø50, ø63
ø80, ø100

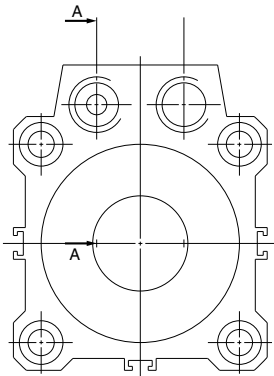
The Replacement Procedure is on p. 323

Construction

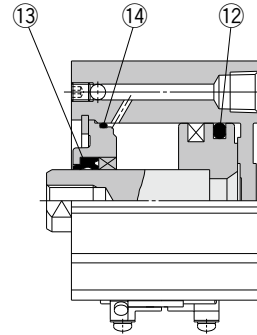
Without auto switch



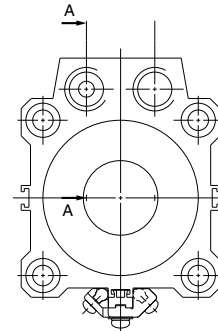
A-A section (port on rod end)



With auto switch



A-A section (port on rod end)



* The numbers correspond with those in the "Construction" of the CQ2 series in the Best Pneumatics catalog.

Seal Kit List

| No. | Description | Material | Note |
|-----|-------------|----------|------|
| ⑫ | Piston seal | NBR | |
| ⑬ | Rod seal | | |
| ⑭ | Gasket | | |

Replacement Parts: Seal Kit

| Bore size (mm) | Part no. | Contents |
|----------------------------------|-------------|---------------------|
| Pneumatic type (non-lube) | | |
| 12 | CQ2B12-PS | Set of nos. ⑫, ⑬, ⑭ |
| 16 | CQ2B16-PS | |
| 20 | CQ2B20-PS | |
| 25 | CQ2B25-PS | |
| 32 | CQ2B32-PS | |
| 40 | CQ2B40-PS | |
| 50 | CQ2B50-PS | |
| 63 | CQ2B63-PS | |
| 80 | CQ2B80-PS | |
| 100 | CQ2B100-PS | |
| Air-hydro type | | |
| 20 | CQ2BH20-PS | Set of nos. ⑫, ⑬, ⑭ |
| 25 | CQ2BH25-PS | |
| 32 | CQ2BH32-PS | |
| 40 | CQ2BH40-PS | |
| 50 | CQ2BH50-PS | |
| 63 | CQ2BH63-PS | |
| 80 | CQ2BH80-PS | |
| 100 | CQ2BH100-PS | |

* The seal kit includes ⑫, ⑬, ⑭. Order the seal kit based on each bore size.

* Since the seal kit does not include a grease pack, it should be ordered separately.

Grease pack part no.: GR-S-010 (10 g)

Actuators

Modular F.R.L.
Pressure Control Equipment

Air Preparation
Equipment

Industrial Filters

Replacement
Procedure

Actuators

Modular F.R.L.
Pressure Control Equipment

Industrial Filters

Compact Cylinder/Axial Piping: Single Acting, Single Rod

CQP2 Series

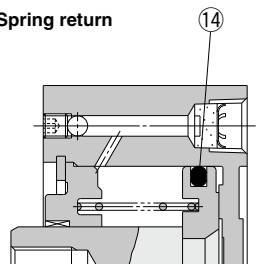
∅12, ∅16, ∅20, ∅25
∅32, ∅40, ∅50

The Replacement Procedure is on p. 323

Construction

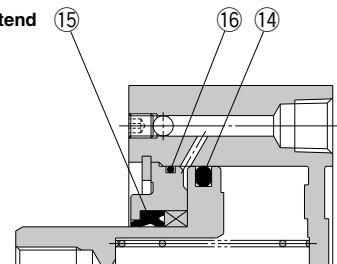
Without auto switch

Spring return

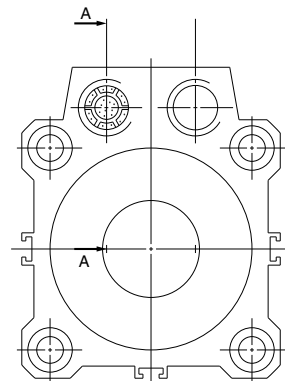


A-A section (port on rod end)

Spring extend

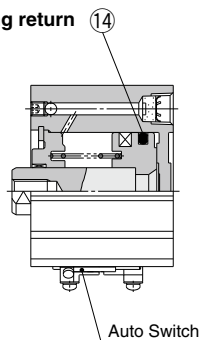


A-A section (port on rod end)



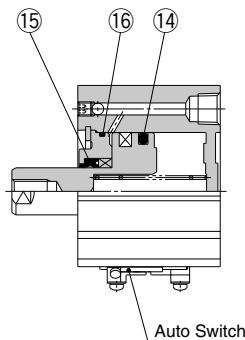
With auto switch

Spring return

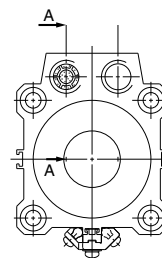


A-A section (port on rod end)

Spring extend



A-A section (port on rod end)



* The numbers correspond with those in the "Construction" of the CQ2 series in the Best Pneumatics catalog.

Seal Kit List

| No. | Description | Material | Note |
|-----|-------------|----------|------|
| 14 | Piston seal | NBR | |
| 15 | Rod seal | | |
| 16 | Gasket | | |

Replacement Parts: Seal Kit

| Bore size (mm) | Part no. | Contents |
|-------------------------------------|-------------|----------|
| Single acting, spring return | | |
| 12 | CQ2B12-S-PS | No. 14 |
| 16 | CQ2B16-S-PS | |
| 20 | CQ2B20-S-PS | |
| 25 | CQ2B25-S-PS | |
| 32 | CQ2B32-S-PS | |
| 40 | CQ2B40-S-PS | |
| 50 | CQ2B50-S-PS | |

* The seal kit includes 14. Order the seal kit based on each bore size.
* Since the seal kit does not include a grease pack, it should be ordered separately.
Grease pack part no.: GR-S-010 (10 g)

Replacement Parts: Seal Kit

| Bore size (mm) | Part no. | Contents |
|-------------------------------------|-------------|------------------------|
| Single acting, spring extend | | |
| 12 | CQ2B12-T-PS | Set of nos. 14, 15, 16 |
| 16 | CQ2B16-T-PS | |
| 20 | CQ2B20-T-PS | |
| 25 | CQ2B25-T-PS | |
| 32 | CQ2B32-T-PS | |
| 40 | CQ2B40-T-PS | |
| 50 | CQ2B50-T-PS | |

* The seal kit includes 14, 15, 16. Order the seal kit based on each bore size.
* Since the seal kit does not include a grease pack, it should be ordered separately.
Grease pack part no.: GR-S-010 (10 g)