

Lock-up Cylinder/Double Acting, Single Rod

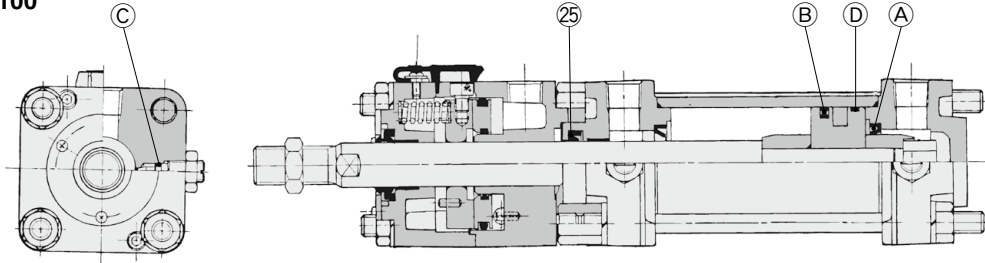
CL1 Series

ø40, ø50, ø63, ø80, ø100
ø125, ø140, ø160

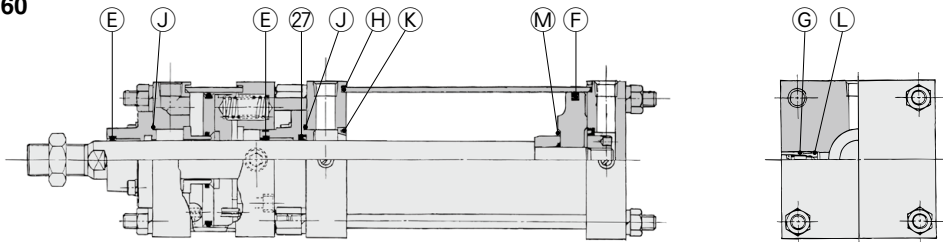
The Replacement Procedure is on p. 376

Construction

ø40 to ø100



ø125 to ø160



* The numbers correspond with those in the "Construction" of the CL1 series in the Best Pneumatics catalog.

Seal Kit List

No.	Description	Material	Note
ø40 to ø100			
25	Rod seal	NBR	
A	Cushion seal		
B	Piston seal		
C	Cushion valve seal		
D	Cylinder tube gasket		
ø125 to ø160			
27	Rod seal	NBR	K, L and M are non-replaceable parts, so they are not included in the seal kit.
E	Wiper ring		
F	Piston seal		
G	Valve seal		
H	Tube gasket		
J	Retaining plate gasket		
K	Cushion seal		
L	Guide gasket		
M	Piston gasket		

Replacement Parts: Seal Kit

Bore size (mm)	Part no.	Contents
40	CL40-PS	
50	CL50-PS	
63	CL63-PS	
80	CL80-PS	
100	CL100-PS	
125	CL125-PS	
140	CL140-PS	
160	CL160-PS	

- * Since the lock section for the CL1 series is normally replaced as a unit, kits are for the cylinder section only. These can be ordered using the order number for each bore size.
- * The seal kit includes a grease pack (ø40, ø50: 10 g, ø63, ø80: 20 g, ø100: 30 g, ø125 to ø160: 40 g). Order with one of the following part numbers when only the grease pack is required.
Grease pack part no.: GR-S-010 (10 g), GR-S-020 (20 g)
- * As for the center trunnion type, it is very difficult to adjust the position of the trunnion bracket and the center of the axis. Therefore repair at SMC is recommended.

Replacement Parts: Lock-up Unit

CL - 40 TN

Bore size (mm)

Port thread type

Nil	Rc
TN	NPT
TF	G

* Consult with SMC when replacing the lock-up unit with a bore size of ø125 to ø160.