

CG1/CG1Y Series

ø20, ø25, ø32, ø40
ø50, ø63, ø80, ø100

The Replacement Procedure is on p. 314

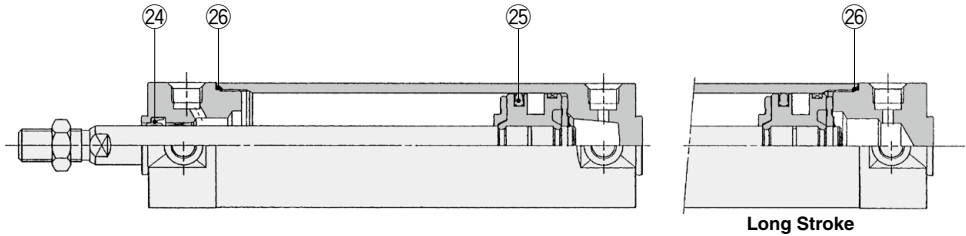
Construction

With rubber bumper

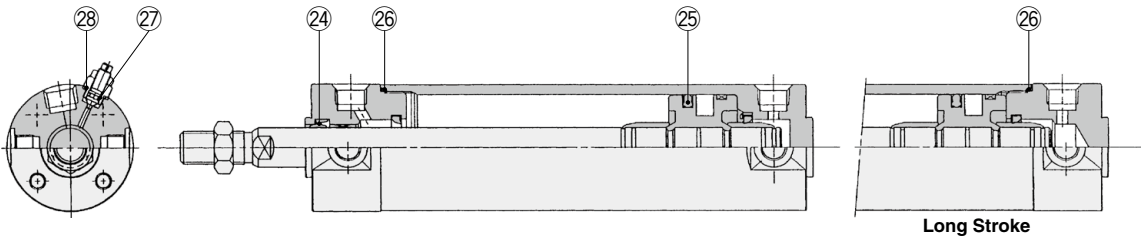
The production of this series has been discontinued.

Check the following before ordering.

- New series CG1-Z/CG1Y-Z → p. 27
- Checking whether the cylinder is a new or a previous model → p. 563, 564



With air cushion



* The numbers correspond with those in the "Construction" of the CG1 series in the **Web Catalog**.

Seal Kit List

No.	Description	Material	Note
24	Rod seal	NBR	
25	Piston seal		
26	Tube gasket		
27	Valve seal		
28	Valve retainer gasket		

Disassembly/Replacement

⚠ Caution

1. Do not replace the bushings.

The bushings are press-fit. To replace them, they must be replaced together with the cover assembly.

2. To replace a seal, apply grease to the new seal before installing it.

If the cylinder is put into operation without applying grease to the seal, it could cause the seal to wear significantly, leading to premature air leakage.

3. Cylinders with ø50 or larger bore sizes cannot be disassembled.

When disassembling cylinders with bore sizes ø20 through ø40, grip the double flat part of either the head cover or the rod cover with a vise and loosen the other side with a wrench or a monkey wrench, etc., and then remove the cover. When re-tightening, tighten approximately 2 degrees more than the original position.

(Cylinders with ø50 or larger bore sizes are tightened with a large tightening torque and cannot be disassembled. If disassembly is required, please contact SMC.)

Replacement Parts: Seal Kit

Bore size (mm)	Part no.	Contents
Standard type: With rubber bumper		
20	CG1N20-PS	Set of nos. 24, 25, 26
25	CG1N25-PS	
32	CG1N32-PS	
40	CG1N40-PS	
Standard type: With air cushion		
20	CG1A20-PS	Set of nos. 24, 25, 26, 27, 28
25	CG1A25-PS	
32	CG1A32-PS	
40	CG1A40-PS	
Smooth cylinder		
20	CG1Y20-PS	Set of nos. 24, 25, 26
25	CG1Y25-PS	
32	CG1Y32-PS	
40	CG1Y40-PS	

Note) Order with a part number for each type and bore size.

* The seal kit includes a grease pack (10 g).

Order with one of the following part numbers when only the grease pack is required.

Standard type

Grease pack part no.: GR-S-010 (10 g)

Smooth cylinder

Grease pack part no.: GR-L-005 (5 g)

GR-L-010 (10 g)

GR-L-150 (150 g)

CG1 Series

ø20, ø25, ø32, ø40

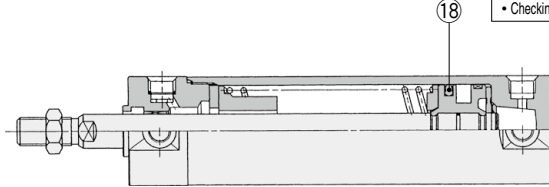
The Replacement Procedure is on p. 314

Construction

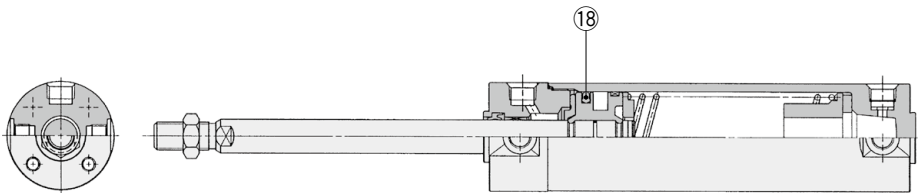
Single acting, spring return

The production of this series has been discontinued. Check the following before ordering.

- New series CG1-Z → p. 29
- Checking whether the cylinder is a new or a previous model → p. 563, 564



Single acting, spring extend



* The numbers correspond with those in the "Construction" of the CG1 series in the **Web Catalog**.

Seal Kit List

No.	Description	Material	Note
18	Piston seal	NBR	

Disassembly/Replacement

⚠ Caution

1. Do not replace the bushings.

The bushings are press-fit. To replace them, they must be replaced together with the cover assembly.

2. To replace a seal, apply grease to the new seal before installing it.

If the cylinder is put into operation without applying grease to the seal, it could cause the seal to wear significantly, leading to premature air leakage.

3. Please note that disassembly by the spring reaction force, because it may cover will pop up. When disassembling cylinders, grip the double flat part of either the head cover or the rod cover with a vise and loosen the other side with a wrench or a monkey wrench, etc., and then remove the cover. When re-tightening, tighten approximately 2 degrees more than the original position.

Replacement Parts: Seal Kit

Bore size (mm)	Part no.	Contents
20	CG1N20-S-PS	
25	CG1N25-S-PS	
32	CG1N32-S-PS	
40	CG1N40-S-PS	

* Since the seal kit does not include a grease pack, it should be ordered separately.

Grease pack part no.: GR-S-010 (10 g)

Single acting, spring extend

* Replacement parts: Seal kit is the same as the case of standard type single rod (with rubber bumper). Refer to page 34.

Actuators

Modular F.R.L.
Pressure Control Equipment

Air Preparation
Equipment

Industrial Filters

Replacement
Procedure

Actuators

Modular F.R.L.
Pressure Control Equipment

Industrial Filters