

# Made to Order Common Specifications: -XC86: With Rod End Bracket -XC87: Cylinder with One-way Lock/Heavy Duty Specifications

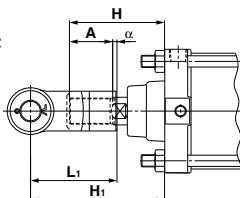


## 60 With Rod End Bracket

Symbol  
-XC86

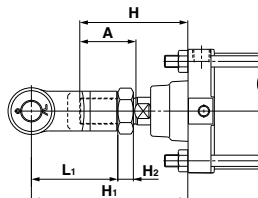
Dimensions (Dimensions other than below are the same as standard type.)

CS2 series  
XC86B, XC86C



Bore size (mm)	Symbol	H	A	$\alpha$	L <sub>1</sub>	H <sub>1</sub>	Applicable knuckle joint part no.	
							I type single knuckle	Y type double knuckle
125	110	50	3.5	100	156.5	I-12A	Y-12A	
140	110	50	3.5	105	161.5	I-14A	Y-14A	
160	120	56	3.5	110	170.5	I-16A	Y-16A	

CS2 series  
XC86D, XC86E



Bore size (mm)	Symbol	H	A	L <sub>1</sub>	H <sub>1</sub>	H <sub>2</sub>	Applicable knuckle joint part no.		Applicable rod end nut
							I type single knuckle	Y type double knuckle	
125	125	65	100	181	18	I-12A	Y-12A	NT-12	
140	125	65	105	186	18	I-14A	Y-14A	NT-12	
160	140	76	110	198	21	I-16A	Y-16A	NT-16	

## 61 Cylinder with One-way Lock/Heavy Duty Specifications

Symbol  
-XC87

Piston rods are heat treated. Even when an external force exceeding the specification range acts temporarily on the piston rod in the locked state, it is resistant to damage and an unlocking failure is unlikely to occur.

### Applicable Series

Series	Description	Model	Action	Note	Vol. no. (for std model)
CLQ	Compact cylinder with lock	CLQ	Double acting, Single rod	Applicable to $\phi 40$ to $\phi 100$ .	②-2 From P. 1008
RLQ	Compact cylinder with air cushion and lock	RLQ	Double acting, Single rod	Applicable to $\phi 40$ to $\phi 63$ .	②-2 From P. 1034
MLGP	Compact guide cylinder with lock	MLGP	Double acting	Applicable to $\phi 40$ to $\phi 100$ .	②-2 From P. 1090
CLK2	Clamp cylinder with lock	CLK2	Double acting, Single rod	Applicable to $\phi 40$ to $\phi 63$ .	②-3 From P. 448
MLU	Plate cylinder with lock	MLU	Double acting, Single rod	Applicable to $\phi 40$ and $\phi 50$ .	②-2 From P. 1060

### How to Order

Standard model no. —XC87

Heavy duty specifications ◀

Specifications: Same as standard type  
Dimensions: Same as the standard type