

Made to Order Common Specifications: -XC30: Rod Side Trunnion



37 Rod Side Trunnion

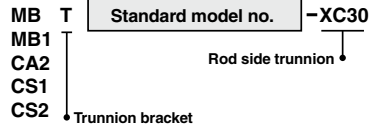
This cylinder shortens the distance between the fulcrum and the rod end by installing a trunnion bracket in front of the rod side cover.

Applicable Series

Series	Description	Model	Action	Vol. no. (for std model)
MB	Standard type	MB-Z*	Double acting, Single rod	②-1 From P. 392
		MBW-Z*	Double acting, Double rod	
	Non-rotating rod type	MBK-Z	Double acting, Single rod	
	MBKW-Z	Double acting, Double rod		
	Cylinder with end lock	MBB	Double acting, Single rod	
Smooth cylinder	MBY-Z	Double acting, Single rod		
MB1	Standard type	MB1-Z*	Double acting, Single rod	②-1 From P. 440
	Non-rotating rod type	MB1W-Z*	Double acting, Double rod	
CA2	Air cylinder	CA2-Z	Double acting, Single rod	②-1 From P. 470
	Smooth cylinder	CA2Y-Z	Double acting, Single rod	
CS1	Standard type	CS1	Double acting, Single rod	②-1 From P. 530
		CS1W	Double acting, Double rod	
	Low friction	CS1Q	Double acting, Single rod	
CS2	Standard type	CS2	Double acting, Single rod	②-1 From P. 568
		CS2W	Double acting, Double rod	
	Smooth cylinder	CS2Y	Double acting, Single rod	

* Except $\phi 125$

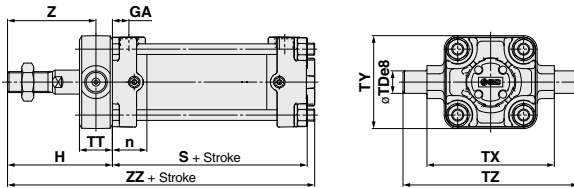
How to Order



Specifications: Same as standard type

Dimensions (Dimensions other than below are the same as standard type.)

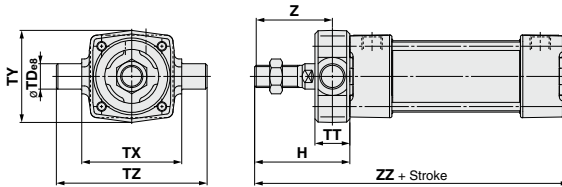
CA2 series



(mm)

Symbol Bore size	n	GA	H	S	TDe8	TT	TX	TY	TZ	Z	ZZ
40	23	11	66	80	15 ^{-0.032} _{-0.050}	22	85	62	117	55	151
50	26	13	71	86	15 ^{-0.032} _{-0.050}	22	95	74	127	60	163
63	27	13	79	94	18 ^{-0.032} _{-0.050}	28	110	90	148	65	179
80	32	16	94.5	111	25 ^{-0.040} _{-0.073}	34	140	110	192	77.5	212.5
100	35	16	100	121	25 ^{-0.040} _{-0.073}	40	162	130	214	80	229

MB series



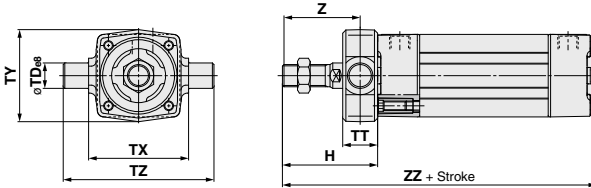
(mm)

Bore size	H	$\phi TDe8$	TT	TX	TY	TZ	Z	ZZ
32	47	12 ^{-0.032} _{-0.050}	17	50	49	74	38.5	135
40	60	16 ^{-0.032} _{-0.050}	22	63	58	95	49	148
50	66	16 ^{-0.032} _{-0.050}	22	75	71	107	55	164
63	72	20 ^{-0.040} _{-0.073}	28	90	87	130	58	170
80	86	20 ^{-0.040} _{-0.073}	34	110	110	150	69	204
100	92	25 ^{-0.040} _{-0.073}	40	132	136	182	72	210

* Dimensions except mentioned above are the same as standard type.

Dimensions (Dimensions other than below are the same as standard type.)

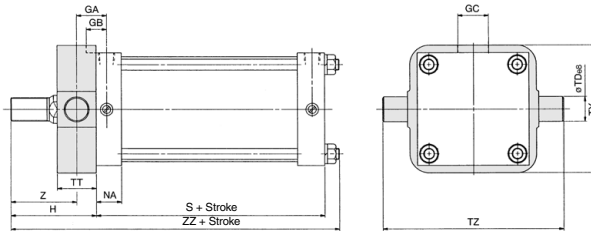
MB1 series



Bore size	H	øTDø8	TT	TX	TY	TZ	Z	ZZ
32	47	12 ^{+0.032} _{-0.059}	17	50	49	74	38.5	135
40	60	16 ^{+0.038} _{-0.059}	22	63	58	95	49	148
50	66	16 ^{+0.038} _{-0.059}	22	75	71	107	55	164
63	72	20 ^{+0.040} _{-0.073}	28	90	87	130	58	170
80	86	20 ^{+0.040} _{-0.073}	34	110	110	150	69	204
100	92	25 ^{+0.040} _{-0.073}	40	132	136	182	72	210

* Dimensions except mentioned above are the same as standard type.

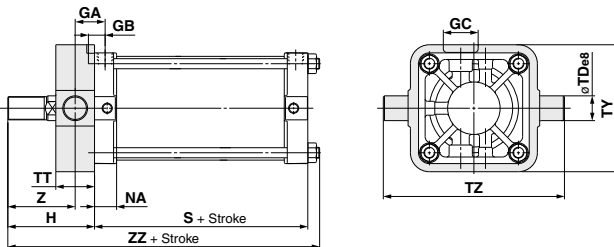
CS1 series



Bore size (mm)	Symbol	GA	GB	GC	NA	S	øTDø8	TT	TY	TZ	H	Z	ZZ
125		38	23	45	32	95	32 ^{-0.050} _{-0.089}	50	164	234	113	88.0	227
140		40.5	23	45	32	95	36 ^{-0.050} _{-0.089}	55	184	262	113	85.5	227
160		45.5	25.5	50	36	103	40 ^{-0.050} _{-0.089}	60	204	292	123	93.0	248
180		45	25.5	50	36	108	45 ^{-0.050} _{-0.089}	59	228	326	138	108.5	272
200		45	25.5	50	36	108	45 ^{-0.050} _{-0.089}	59	257	355	138	108.5	272
250		54.5	30	60	46	138	56 ^{-0.060} _{-0.106}	69	325	447	163	128.5	331
300		59.5	30	70	46	143	67 ^{-0.060} _{-0.106}	79	390	534	178	138.5	357

* Dimensions except mentioned above are the same as standard type.

CS2 series



Bore size (mm)	GA	GB	GC	NA	S	TDø8	TT	TY	TZ	H	Z	ZZ
125	38	23	45	28.5	96	32 ^{-0.050} _{-0.089}	50	164	234	112	87	221
140	40.5	23	45	28.5	96	36 ^{-0.050} _{-0.089}	55	184	262	112	84.5	221
160	46	26	50	32.5	104	40 ^{-0.050} _{-0.089}	60	204	292	122	92	241

