

# Made to Order Common Specifications: -XB14: Cylinder with Heat Resistant Auto Switch



## 10 Cylinder with Heat Resistant Auto Switch CQ2 Series/D-M9□J

Symbol  
**-XB14**

Heat resistant (Max. 150°C) type added to the D-M9□ compact auto switch. Choice of output types: PNP, NPN

### Applicable Series

Series	Description	Model	Action	Note	Vol. no. (for std model)
CDQ2	Compact cylinder	CDQ2-Z	Double acting, Single rod	ø16 to ø63 only Except with rubber bumper	②-1 From P. 773

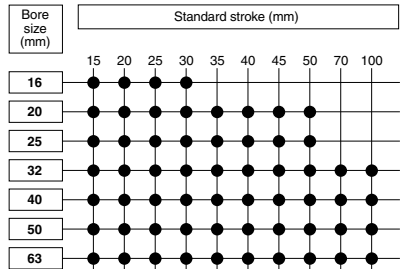
### How to Order

CDQ2 Standard model no. - M9NJL □ - XB14

Symbol	Output
M9NJ	NPN
M9PJ	PNP

\* Lead wire length symbols  
3 m..... L (Example) M9NJL  
5 m..... Z (Example) M9NJZ

Auto switch ●  
Number of auto switches ●  
Cylinder with heat resistant auto switch ●



• Manufacturing of intermediate strokes  
Intermediate strokes in 1 mm increments are available by using spacers with standard stroke cylinders.

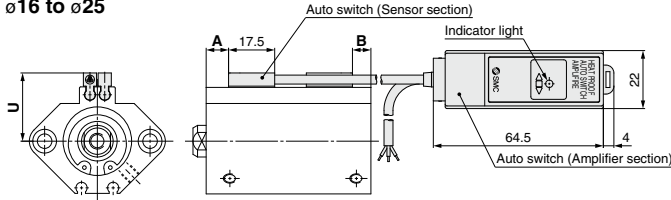
### Specifications

Ambient and fluid temperature range	0 to 150°C
Seal material	Fluororubber
Grease	Heat resistant grease
Standard stroke	See right side.
Dimensions	See below.
Specifications other than above	Same as standard type

Note) For detailed specifications about auto switch, refer to page 1636.

### Proper Mounting Auto Switch Position (Detection at stroke end)

ø16 to ø25

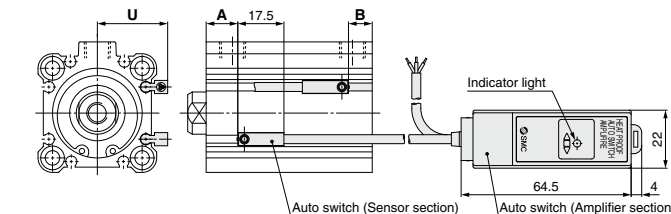


Auto Switch Proper Mounting Position (Detection at stroke end) and Mounting Height (mm)

Bore size	Auto switch model			
	D-M9□J	A	B	U
16	9.5	7	21	
20	9.5	8.5	23.5	
25	9.5	9	27	
32	11	8	29	
40	15	10.5	31	
50	13	13.5	36	
63	15.5	16.5	41.5	

Note) Adjust the auto switch after confirming the operating condition in the actual setting.

ø32 to ø63



Operating Range (mm)

Auto switch model	Bore size						
	16	20	25	32	40	50	63
D-M9NJ□	4.5	4.5	4.5	5	4.5	5	5
D-M9PJ□	4.5	4.5	4.5	5	4.5	5	5

\* Since the operating range is provided as a guideline at room temperature, it cannot be guaranteed. It may change substantially depending on the ambient environment.

\* Dimensions on the cylinder body is equivalent to the standard type, double acting, single rod of the CDQ2 series.

Note 1) Auto switches are shipped in the same package, but not assembled in order to protect it at the time of shipment. Assemble it by referring to A, B dimensions for mounting position shown in the table above.

Note 2) Tightening torque for auto switch mounting M3 screw should be set as 0.5 to 0.7 N·m.

# Made to Order Common Specifications: -XB14: Cylinder with Heat Resistant Auto Switch



## 10 Cylinder with Heat Resistant Auto Switch CQ2 Series/D-F7NJ□ Symbol **-XB14**

Heat resistant compact cylinder CDQ2 series (ø16 to ø63) which can mount heat resistant solid state switch. (D-F7NJ ½ Max. 150°C)

### Applicable Series

Series	Description	Model	Action	Note	Vol. no. (for std model)
CQ2	Compact cylinder	CQ2-Z	Double acting, Single rod	Applicable to ø16 to ø63 Except with rubber bumper	②-1 From P. 773

### How to Order

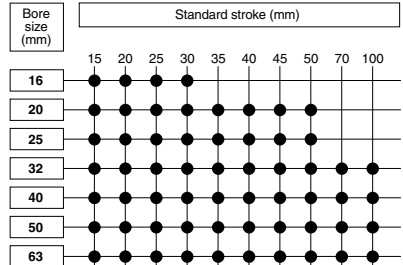
CDQ2 Standard model no. - F7NJL - XB14

Cylinder with heat resistant auto switch •

### Specifications

Ambient and fluid temperature range	0 to 150°C
Seal material	Fluororubber
Grease	Heat resistant grease
Standard stroke	See right side.
Dimensions	See below.
Specifications other than above	Same as standard type

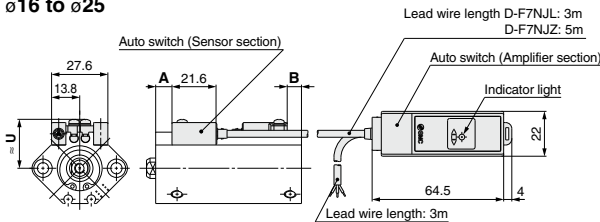
Note) For detailed specifications about auto switch, refer to page 1637.



• Manufacturing of intermediate strokes  
Intermediate strokes in 1 mm increments are available by using spacers with standard stroke cylinders.

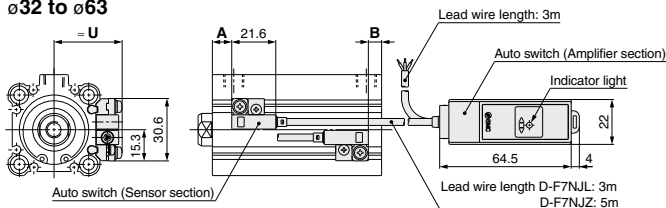
### Proper Mounting Auto Switch Position (Detection at stroke end)

ø16 to ø25



Bore size (mm)	(mm)		
	A	B	U
16	8	5.5	22.5
20	8	7	25.5
25	8	7.5	28
32	9.5	6.5	36
40	13.5	9	38
50	11.5	12	43.5
63	14	15	48.5

ø32 to ø63



### Auto Switch Mounting Bracket: Part No.

Auto switch model	Bore size (mm)						
	16	20	25	32	40	50	63
D-F7NJL(Z)	BQ4-012			BQJ2-032			

### Auto Switch Mounting Bracket Weight

Mounting bracket part no.	Weight (g)
BQ4-012	1.5
BQJ2-032	3.6

\* Dimensions on the cylinder body is equivalent to the standard type, double acting, single rod of the CDQ2 series.

Note 1) Auto switches are shipped in the same package, but not assembled in order to protect it at the time of shipment. Assemble it by referring to A, B dimensions for mounting position shown in the table above.

Note 2) Tightening torque for auto switch mounting M3 screw should be set as 0.5 to 0.7 N·m.



