

! Contact our sales office for delivery dates and prices as this is a special model.

Specialized Product

Point to Group
P.G. information

5-Port Solenoid Valve with Main Valve Position Detection *SY5100-X30*

Features

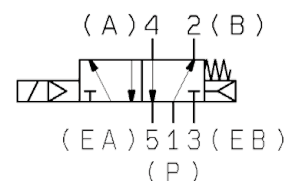
- **The main valve position is detected by the switch.**
Main valve position when the valve is OFF: Signal output
Main valve position when the valve is ON: No signal output
- **Can be used as an interlock signal**



* The sub-plate is ordered separately.

M8/M12 connector available

Symbol



Caution

To ensure the safest possible operation of this product, please be sure to thoroughly read the "Safety Instructions" in our "Best Pneumatics" catalog before use.