

# Antistatic Speed Controller

(In-line type / Elbow type)

SMC CORPORATION  
1-16-4 Shimbashi, Minato-ku  
Tokyo 105-0004, JAPAN  
URL: <http://www.smcworld.com>

## AS-X260

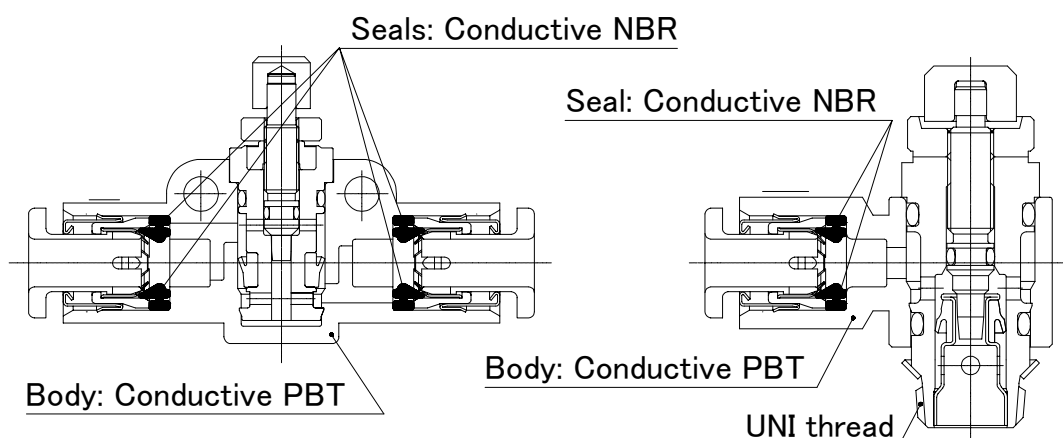
### Application: Antistatic speed controller for semiconductor manufacturing equipment.

The use of conductive material (Seal: Conductive NBR) and UNI thread construction (gasket seal type) that leads electric charge to the grounded side (\*1) helps prevent the electric charge of the speed controller.

⚠ \*1) Make sure to ground the female thread to which a speed controller is connected. Otherwise, this speed controller or the tube will be left charged. Use antistatic tube.

### Feature 1: Surface electrical resistance $10^4$ to $10^7 \Omega$ .

(Conductive material is used for the body and seals)



### Feature 2: UNI thread construction (gasket seal type) free from electric charge. (AS2201F-U01-04-X260 type, AS22\*1F-U01-06-X260 type)

Using UNI threads prevents electric charge, as a male thread and female thread do not come in contact with each other. (For tapered threads, the threaded portion needs to be coated with sealant. This electrical insulation causes electric charge.)

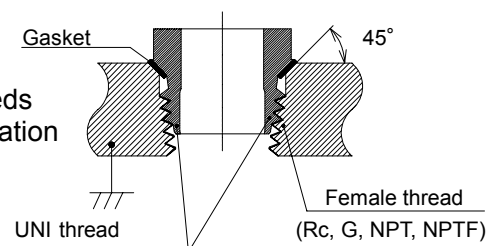


Illustration: UNI thread configuration  
(Chamfer the female threads)

## Comparison with standard products (Parts listed other than below are the same as the standard products)

| Model no. (-X260)   | Standard no.<br>(Type)         | Different parts (or the added parts)<br>from the<br>standard products | Material       |
|---------------------|--------------------------------|---|----------------|
| AS1000F-04-X260     | AS1000F-04<br>(In-line type)   | Body A  | Conductive PBT |
|                     |                                | Seal  | Conductive NBR |
|                     |                                | Cassette  | —              |
|                     |                                | Name plate  | PET            |
| AS12*1-M5-F04-X260  | AS12*1-M5-F04<br>(Elbow type)  | Cassette  | —              |
|                     |                                | Seal  | Conductive NBR |
|                     |                                | Name plate  | PET            |
| AS2201F-U01-04-X260 | AS2201F-U01-04<br>(Elbow type) | Body A  | Conductive PBT |
|                     |                                | Knob  | Brass          |
|                     |                                | Cassette  | —              |
|                     |                                | Seal  | Conductive NBR |
|                     |                                | Name plate  | PET            |
| AS22*1F-U01-06-X260 | AS22*1F-U01-06<br>(Elbow type) | Body A  | Conductive PBT |
|                     |                                | Knob  | Brass          |
|                     |                                | Cassette  | —              |
|                     |                                | Seal  | Conductive NBR |
|                     |                                | Name plate  | PET            |

## Specifications

### Common specifications

|                                       |  |
|---------------------------------------|--|
| Fluid                                 | Air  |
| Proof pressure                        | 1.5MPa (AS1000F-04-X260: 1.05MPa)  |
| Maximum operating pressure (*2)       | 1MPa (AS1000F-04-X260: 0.7MPa)   |
| Minimum operating pressure            | 0.1MPa   |
| Ambient and<br>fluid temperature (*2) | -5 to 60°C<br>(No freezing)  |
| Number of needle rotations            | 10 turns (AS1000F-04-X260: 8 turns)  |
| Applicable tube materials             | Antistatic soft nylon tubing (Series TAS)<br>Antistatic polyurethane tubing (Series TAU) |
| Surface resistance                    | $10^4$ to $10^7 \Omega$  |

\*2) This value shows the maximum operating pressure for fittings in the indicated temperature range.

When connecting tubing, the maximum operating pressure and temperature range values for tubing should be observed.

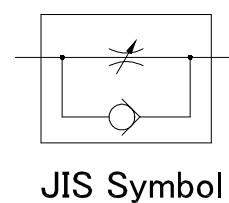
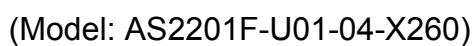
### Individual specifications

| Model no.           | Body size       | Control method | Port size | Applicable tube O.D. | Dimensions                   |
|---------------------|-----------------|----------------|-----------|----------------------|------------------------------|
| AS1000F-04-X260     | M5 standard     | —              | —         | Ø4mm                 | Refer to the next page.      |
| AS1201-M5-F04-X260  |                 | Meter-out      | M5 × 0.8  |                      | (*3)                         |
| AS1211-M5-F04-X260  |                 | Meter-in       |           |                      |                              |
| AS2201F-U01-04-X260 | 01, 02 standard | Meter-out      | UNI1/8    | Ø4mm                 | Refer to the next page. (*3) |
| AS2201F-U01-06-X260 |                 | Meter-out      |           | Ø6mm                 | (*3)                         |
| AS2211F-U01-06-X260 |                 | Meter-in       |           |                      |                              |

\*3) Dimensions are the same as standard products. (Refer to “Comparison with standard products”).

Refer to our Best Pneumatics general catalog for details.

(Model: AS1000F-04-X260)



✂ Reference dimensions after UNI thread installation.

 **Caution:** To ensure the safest possible operation of this product, please be sure to read thoroughly the “Safety Instructions” in our “Best Pneumatics” general catalog before use.