



Contact our sales office for delivery dates and prices as this is a special model.

SP154X-008E
P: TV



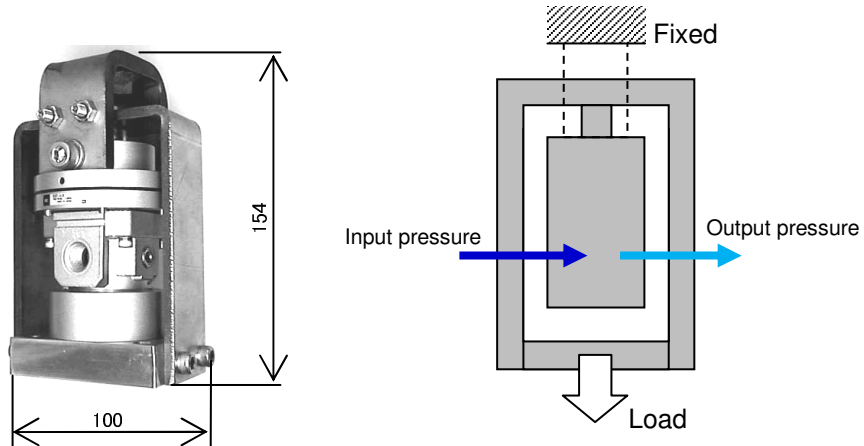
P.G. Information (Specialized Product)

SMC CORPORATION
4-14-1, SOTO-KANDA,
CHIYODA-KU,
TOKYO 101-0021, JAPAN
URL: <http://www.smcworld.com>

Load sensor

■ Features: Sensing loads with air!!

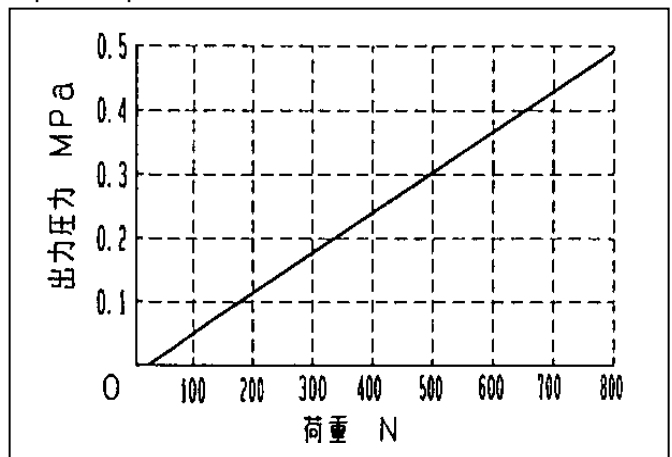
Possible to output a pneumatic pressure signal proportional to the load



■ Specifications

Max. operating pressure (Supply pressure)	0.8MPa
Input pressure	0.05 to 0.5MPa
Fluid	Air
Ambient and fluid temperature	-5 to 60°C (No freezing)
Port size	2 X Rc1/4
Linearity	Within +/- 5%F.S. (F.S.:0.5MPa)
Construction	Relieving type
Mass	2.0kg

Input/Output Characteristics



■ How to Order

XT477-3-X1

■ Application example

All air balance system, all air load measurement etc.

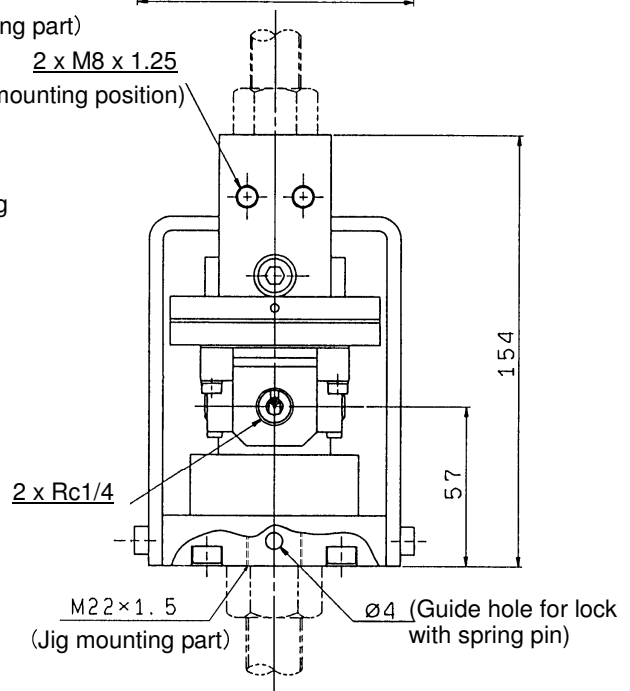
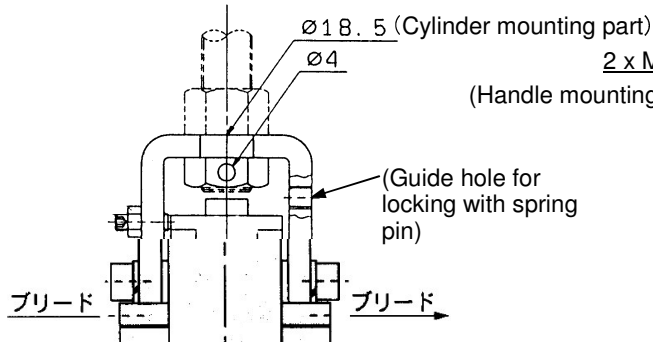
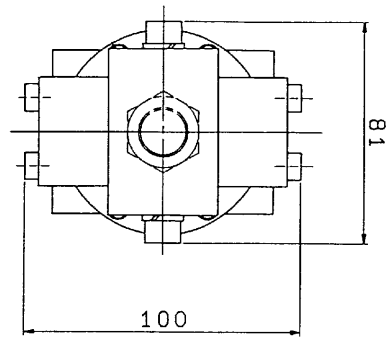
■ Dimensions mm

Precautions

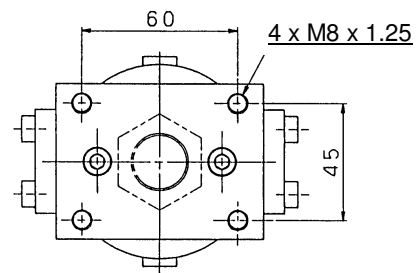
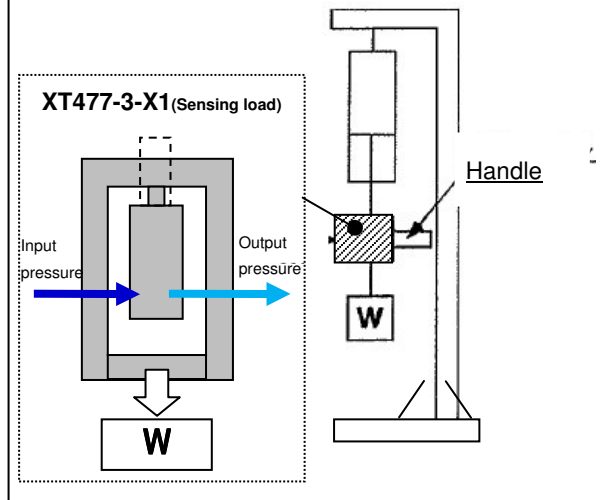


Caution

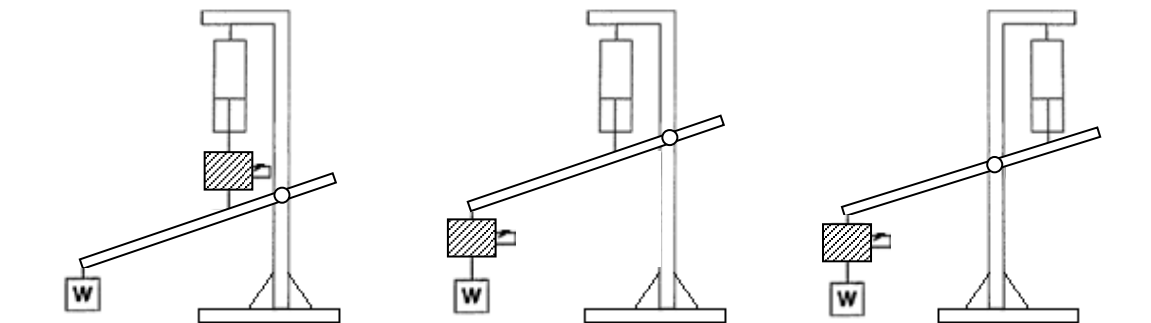
- (1) Please use a mounting hole ($\phi 18.5$) for a suspension bracket above the load sensor to mount the product to a cylinder rod.
- (2) Please use a female screw (M22X1.5) on the bottom of the load sensor and mount a jig to hang onto a workpiece.
- (3) Please implement an appropriate lock with a spring pin to mount the product to a cylinder or jig.



Mounting example (Only a cylinder ($\phi 50$) can be used in this case)



Caution: This product cannot be used for the balance systems below.



* If this load sensor is used for a balance system, please refer to “Example of all air balance system circuit”. Please contact our sales representative if you have any questions.



Caution To ensure the safest possible operation of this product, please be sure to thoroughly read the “Safety Instructions” in our “Best Pneumatics” catalog before use.