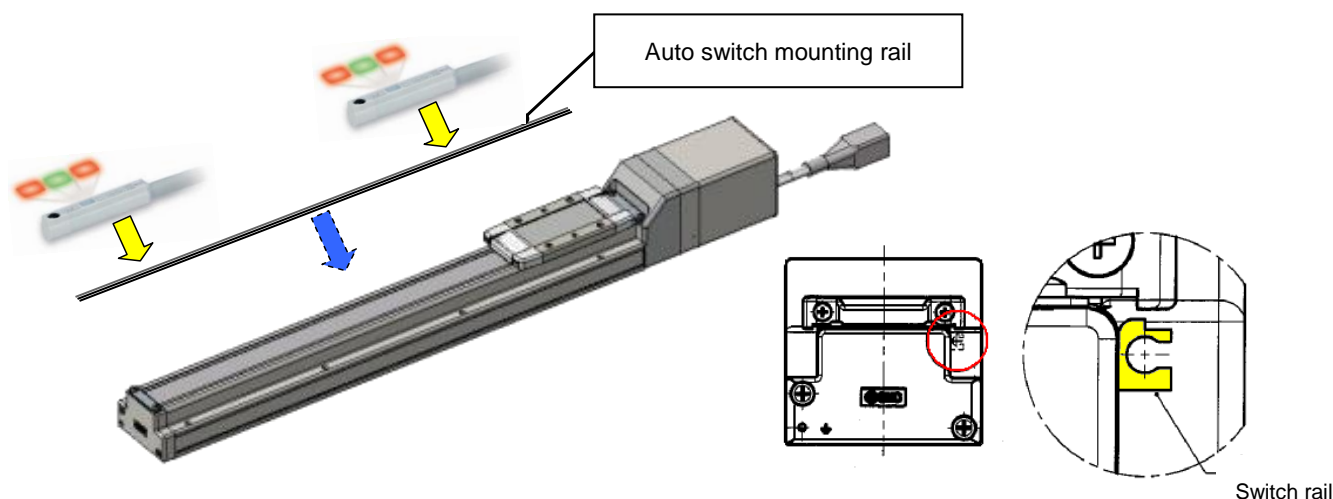


Electric Actuator/Slider Type With Auto Switch Mounting




SMC Corporation
4-14-1, SOTO-KANDA,
CHIYODA-KU,
TOKYO 101-0021, JAPAN
URL: <http://www.smcworld.com>

■Features

- Possible to mount compact auto switches (D-M9 series)
- Sensor output at the actual table location is possible, such as home detection sensor, overrun detection, etc.
- Possible to mount the auto switch mounting rail on both sides



Variations

Size	Motor type	LEFS (Ball Screw Drive)	LEFB (Belt Drive)	
			Motortop mounting type	Motor bottom mounting type
				
25	AC servo motor	●	●	●
32		●	●	●
40		●	●	●

Specifications

The specifications are the same as the standard product.

How to Order

- **Standard model number** **-X536**

Please refer to the attached drawing for details.

Dimensions

Please refer to the attached drawing.

Others

- Auto switch mounting rail will be enclosed, but not assembled.

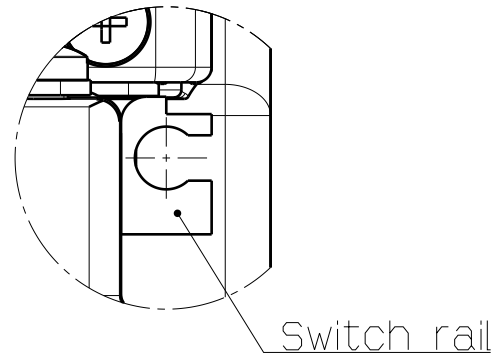
Mount an auto switch mounting rail after an electric actuator is mounted.

- Order auto switches separately.
- There are locations where auto switches cannot be mounted due to the rail mounting screws.
- Rail mounting screws are enclosed. (The number of screws differ depending on strokes.)
- Consider hysteresis when setting auto switches.
- When using for home detection, it is necessary to use z-phase signal from motor to secure home accuracy.



Caution To ensure the safest possible operation of this product, please be sure to thoroughly read the "Safety Instructions" in our "Best Pneumatics" catalog before use.

R(Direction of switch rail)
Note 8)



Body mounting
reference plane
Note 1)

Ø3 H9 (+0.025 / 0)
depth 3
4xM5x0.8
thread depth 8.5

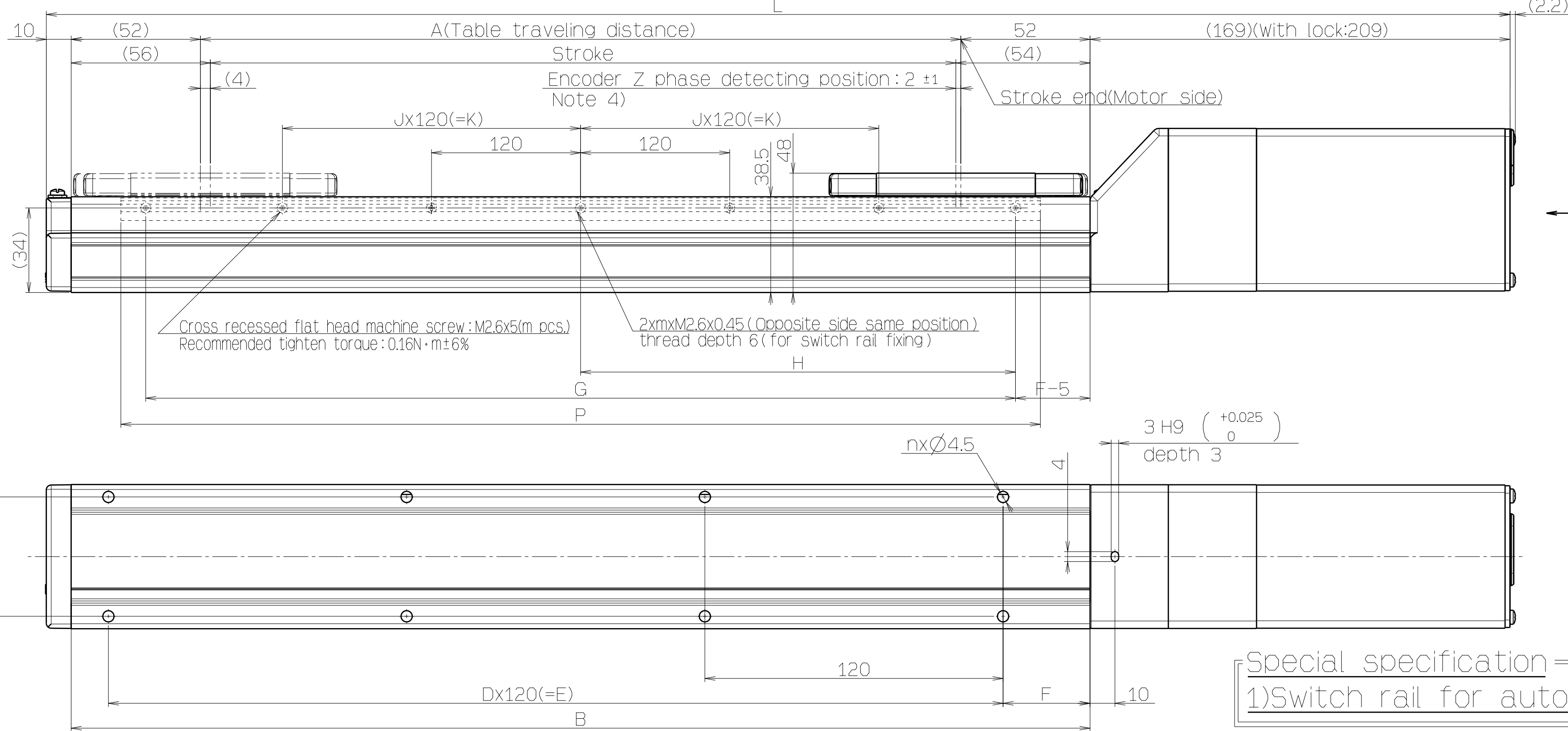
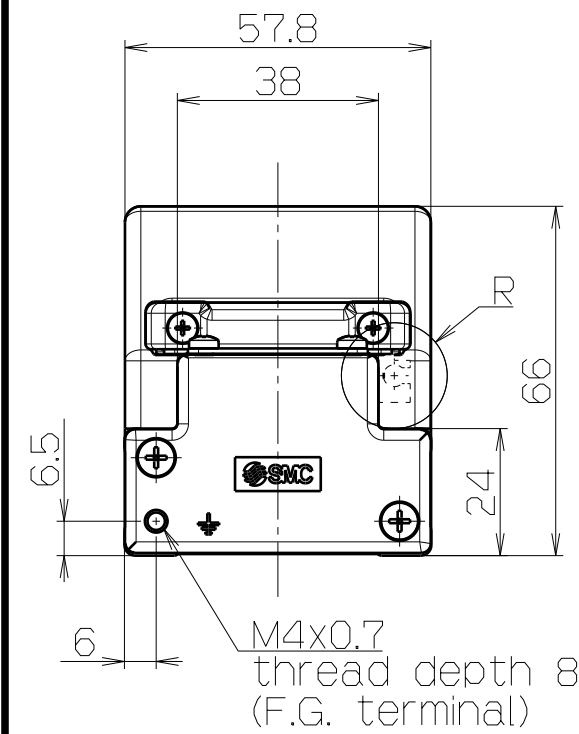
(102)
64
45
Table magnet position: ±4
From the center of the table

Switch cable come out
direction Note 9)
(Right side switch rail)

Switch cable come out
direction Note 9)
(Left side switch rail)

Switch rail for auto switch:D-M9
Note 7) 8)

3 H9 (+0.025 / 0)
depth 3



Cross recessed flat head machine screw:M2.6x5(m pcs)
Recommended tighten torque:0.16N·m±6%

2xM2.6x0.45(Opposite side same position)
thread depth 6(for switch rail fixing)

How to order
LEFS25*-*-*-X536

①Motor type

Lead	
H	20mm
A	12mm
B	6mm

Stroke

50	50mm
?	?
600	600mm

*Deal with per 50mm.

Motor option

Nil	without Lock
B	With Lock

I/O connector

Nil	without connector
H	with connector

②Driver type

Cable length *1) *2)

Symbol	Length	Motor type S2/S6 T6	V6
Nil	without cable	●	●
2	2m	●	-
3	3m	-	●
5	5m	●	●
A	10m	●	●
c	20m	-	●

*2) The length of motor, encoder and lock cable are same.

Cable type

Nil	without Cable
S	Standard cable
R	Robotic type cables (Flexible type cables)

*Motor cable and Encoder cable are included to the actuator.
(when Motor option "With lock" is selected. Lock cable is included too.)

③Motor type/Applicable driver

Symbol	Type	Output (Size)	Compatible interface (Driver type symbol)					
			Pulse input (A□, B□)	CC-Link (C□)	SSCNET (S□)		MECHATROLINK (M2, U2)	
					■	■/H	■	■
S2	AC servo motor (Incremental encoder)	100W (□40)	LECSA□-S1	-	-	-	-	-
S6			LECSB□-S5	LECSG□-S5	LECSS□-S5	-	-	-
T6	AC servo motor (Absolute encoder)		-	-	-	LECSS2-T5	-	-
V6			-	-	-	-	LECYM2-V5	-
			-	-	-	-	-	LECYU2-V5

*1)When (with driver) is selected, cable is included. Select cable type and length surely.
Example)
S2S2:Standard cable (2m)+driver (LECSS2)
S2 :Standard cable (2m)
Nil :without cable and driver

Table-2. Dimensions

Model	L		A	B	n	D	E	F	G	H	J	K	m	P
	without lock	with lock												
LEFS25*-50*-X536	339	379	56	160	4	-	-	20	100	50	-	-	3	120
LEFS25*-100*-X536	389	429	106	210	4	-	-	35	150	75	-	-	3	170
LEFS25*-150*-X536	439	479	156	260	4	-	-	35	200	100	-	-	3	220
LEFS25*-200*-X536	489	529	206	310	6	2	240	35	250	125	-	-	3	270
LEFS25*-250*-X536	539	579	256	360	6	2	240	35	300	150	-	-	3	320
LEFS25*-300*-X536	589	629	306	410	8	3	360	35	350	175	1	120	5	370
LEFS25*-350*-X536	639	679	356	460	8	3	360	35	400	200	1	120	5	420
LEFS25*-400*-X536	689	729	406	510	8	3	360	35	450	225	1	120	5	470
LEFS25*-450*-X536	739	779	456	560	10	4	480	35	500	250	1	120	5	520
LEFS25*-500*-X536	789	829	506	610	10	4	480	35	550	275	1	120	5	570
LEFS25*-550*-X536	839	879	556	660	12	5	600	35	600	300	2	240	7	620
LEFS25*-600*-X536	889	929	606	710	12	5	600	35	650	325	2	240	7	670

Table-3. Weight

Stroke[mm]	50	100	150	200	250	300	350	400	450	500	550	600	Additional weight with lock[kg]
Weight[kg]	2.16	2.30	2.44	2.60	2.72	2.85	3.00	3.15	3.28	3.40	3.56	3.70	0.35

Table-4. Cable

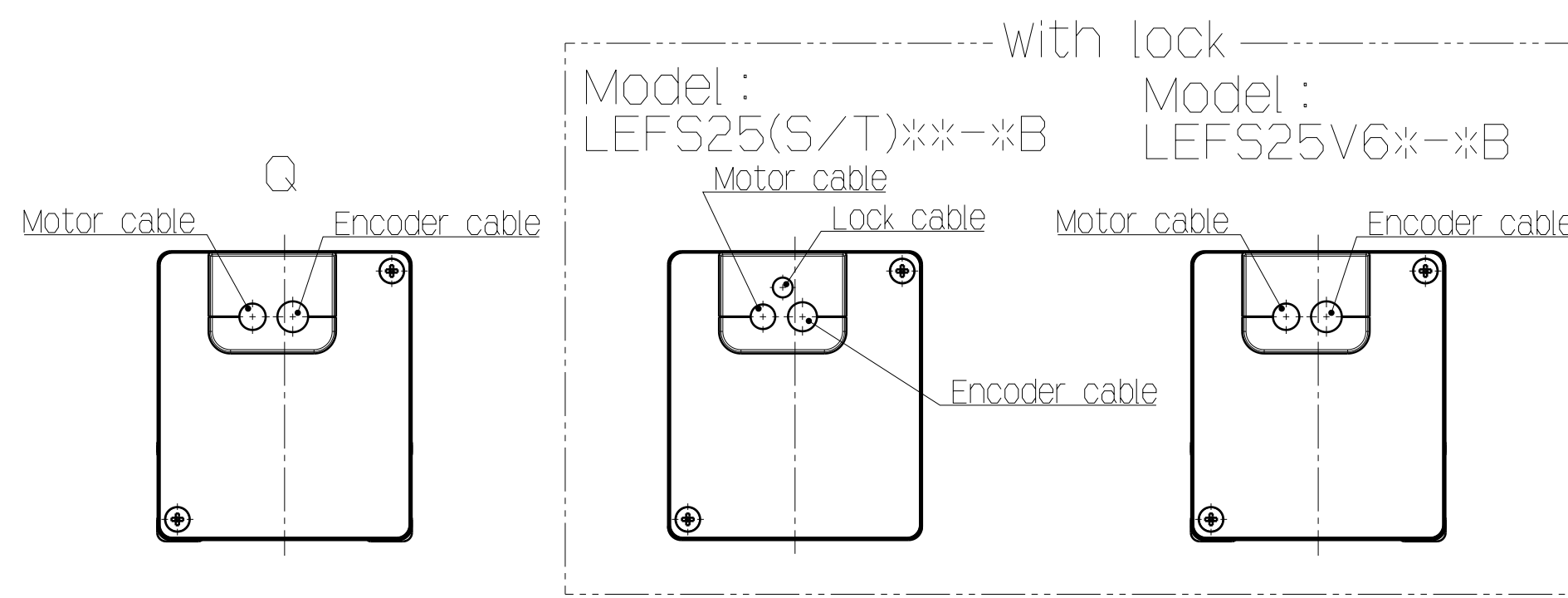
Motor type	Encoder cable	Motor cable without lock	Motor cable with lock (Note)	Lock cable (Note)
S2/S6/T6 V6	Ø7	Ø6	Ø7	Ø4.5

Note) Motor option/with lock is selected.
S2/S6/T6:Encoder・Motor・Lock/3 pcs.
V6 :Encoder・Motor(with lock)/2 pcs.

Table-5. Accessories

Part name	QTY	Remark
Switch rail	1	
Cross recessed flat head machine screw	m	M2.6x5

Special specification
1)Switch rail for auto switch

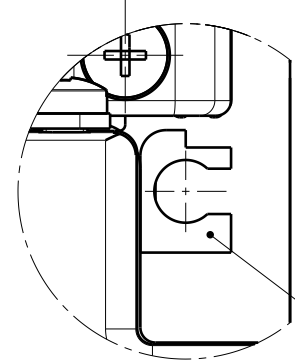


Note

- When mounting the actuator by using "Body mounting reference plane", the height of attached surface or the height of pin should be 3mm or more. (5mm in recommended height)
- Max. acceleration/deceleration changes according to the work load.
Check "work load Graph-Acceleration/Deceleration Graph" of catalog.
- Needed, depends on speed and work load. Check "Speed-work load Graph" on catalog.
- The Z phase first detecting position from the stroke end of the motor side.
- Refer to "Specifications table" of the catalog for electric specifications (motor and lock).
- Please avoid loosen the screws for mounting of motor.
- Switch rail is included as attachment, please mount switch rail after mounting actuator.
(Other wise switch rail will interfere body mounting holes.)
- Switch rail can be used both (left and right) side. Please confirm the direction of the mounting.
- There is the restriction of the coming out direction of the auto switch cable.
If the direction is wrong, the auto switch won't work correctly.
- Auto switch is not included.
- Unless otherwise noted along with a separate contract or agreement within the Product Specifications, the safety instructions specified in the product catalog are applied.
Please contact your local SMC Sales office for further details.

Table-1. Actuator specifications

Stroke [mm]	50, 100, 150, 200, 250, 300, 350, 400, 450, 500, 550, 600			
Work load [kg]	Horizontal	10	20	20
	Vertical	4	8	15
Max. speed [mm/s]	to 400	1500	900	450
	401 to 500	1200	720	360
	501 to 600	900	540	270
Pushing speed of return to origin [mm/s]	30 or less			
Max. acceleration/deceleration [mm/s²]	20,000 (Refer to catalog for limit according to work load and duty ratio.)			
Positioning repeatability [mm]	±0.02			
Lost motion [mm]	0.1 or less			
Lead [mm]	20	12	6	
Impact resistance/vibration resistance [m/s²]	50 / 20			
Drive method	Ball screw			
Guide type	Linear guide			
Operating temperature range [°C]	5 to 40			
Operating humidity range [%RH]	90 or less (No condensation)			
Regeneration option	Note 3)			
Applicable auto switch	D-M9 series (Not included)			



Switch rail

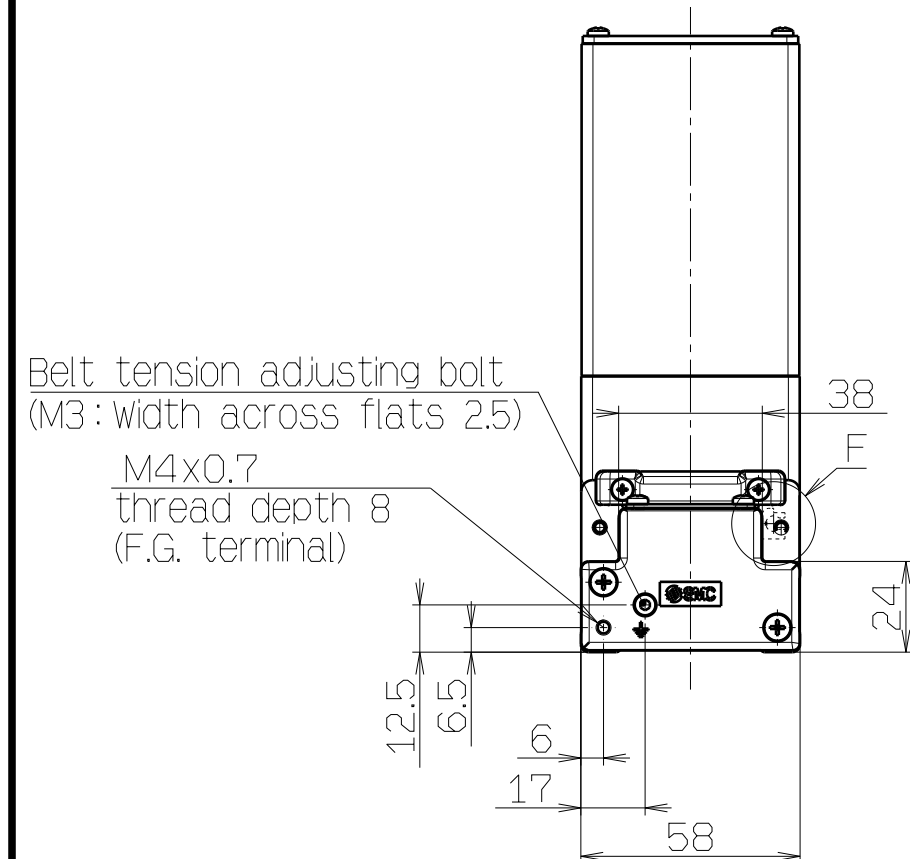


Table-5. Cable

Motor type	Encoder cable	Motor cable		Lock Cable (Note)
		without lock	with lock (Note)	
S2/S6/T6	Ø7	Ø6	–	Ø4.5
V6		Ø7	Ø7	–

Note) Motor option/with lock is selected.
S2/S6/T6: Encoder・Motor・Lock/3 pcs.
V6 : Encoder・Motor(with lock)/2 pcs.

Table-6. Accessories

Part name	QTY	Remark
Switch rail	1	
Cross recessed flat head machine screw for precise equipment	m	M2.6x5 (For switch rail mounting)

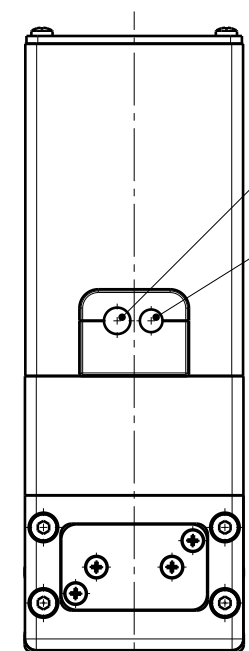
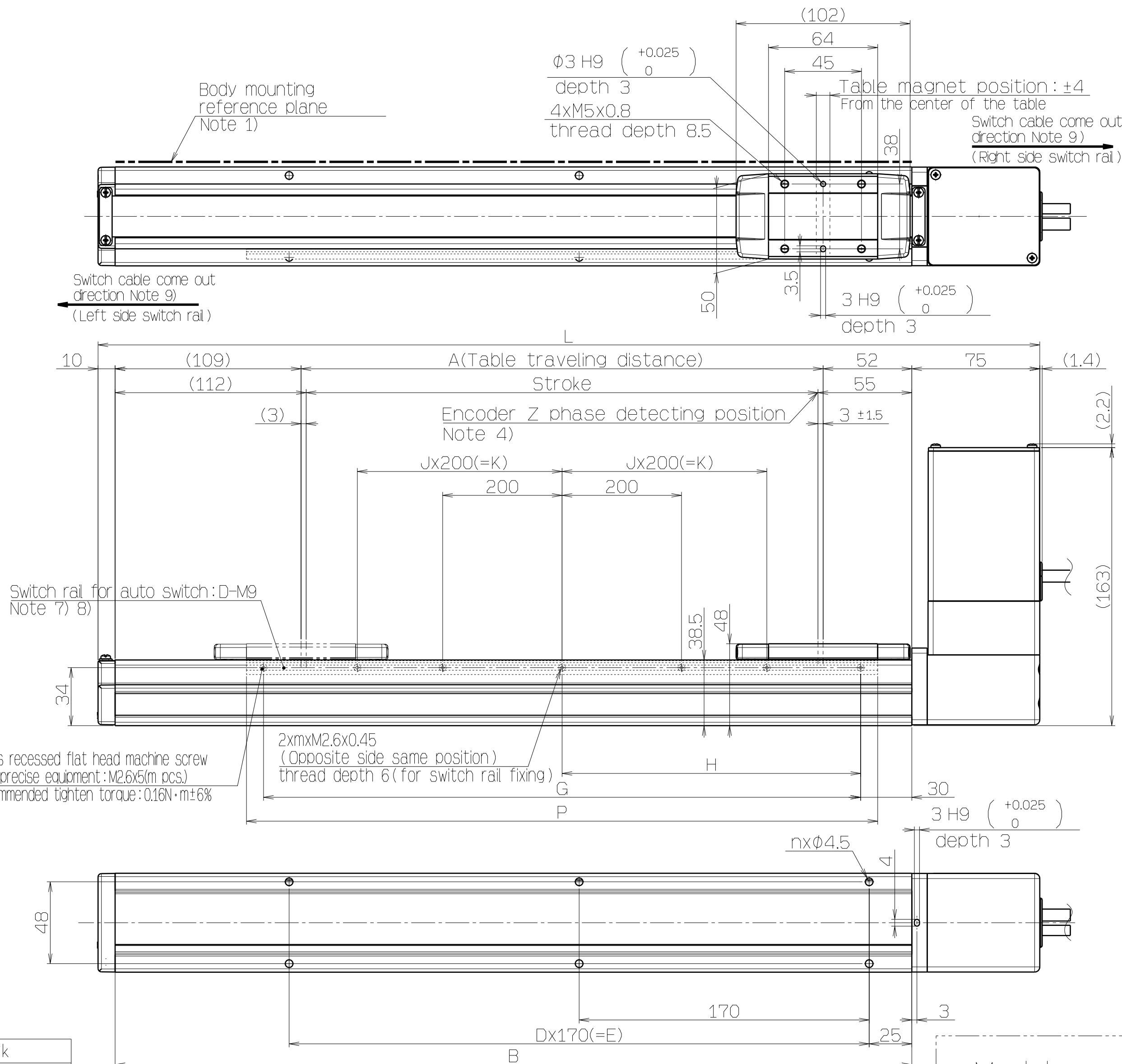
Table-3. Dimensions

Model	L	A	B	n	D	E	G	H	J	K	m	P
LEFB25*S-300*-*****-X536	552	306	467	6	2	340	350	175	-	-	3	370
LEFB25*S-400*-*****-X536	652	406	567	8	3	510	450	225	1	200	5	470
LEFB25*S-500*-*****-X536	752	506	667	8	3	510	550	275	1	200	5	570
LEFB25*S-600*-*****-X536	852	606	767	10	4	680	650	325	1	200	5	670
LEFB25*S-700*-*****-X536	952	706	867	10	4	680	750	375	1	200	5	770
LEFB25*S-800*-*****-X536	1052	806	967	12	5	850	850	425	2	400	7	870
LEFB25*S-900*-*****-X536	1152	906	1067	14	6	1020	950	475	2	400	7	970
LEFB25*S-1000*-*****-X536	1252	1006	1167	14	6	1020	1050	525	2	400	7	1070
LEFB25*S-1100*-*****-X536	1352	1106	1267	16	7	1190	1150	575	2	400	7	1170
LEFB25*S-1200*-*****-X536	1452	1206	1367	16	7	1190	1250	625	3	600	9	1270
LEFB25*S-1300*-*****-X536	1552	1306	1467	18	8	1360	1350	675	3	600	9	1370
LEFB25*S-1400*-*****-X536	1652	1406	1567	20	9	1530	1450	725	3	600	9	1470
LEFB25*S-1500*-*****-X536	1752	1506	1667	20	9	1530	1550	775	3	600	9	1570
LEFB25*S-1600*-*****-X536	1852	1606	1767	22	10	1700	1650	825	4	800	11	1670
LEFB25*S-1700*-*****-X536	1952	1706	1867	22	10	1700	1750	875	4	800	11	1770
LEFB25*S-1800*-*****-X536	2052	1806	1967	24	11	1870	1850	925	4	800	11	1870
LEFB25*S-1900*-*****-X536	2152	1906	2067	24	11	1870	1950	975	4	800	11	1970
LEFB25*S-2000*-*****-X536	2252	2006	2167	26	12	2040	2050	1025	5	1000	13	2070

Table-4. Weight

Stroke[mm]	300	400	500	600	700	800	900	1000	1100	1200	Additional weight with lock[kg]
weight[kg]	3.16	3.41	3.66	3.91	4.16	4.41	4.66	4.91	5.16	5.41	

Stroke[mm]	1300	1400	1500	1600	1700	1800	1900	2000	Additional weight with lock[kg]
weight[kg]	5.66	5.91	6.16	6.41	6.66	6.91	7.16	7.41	



Encoder cable

Motor cable

How to order
LEFB25*S-**-****-X536

①Motor type.

Lead	
S	54mm

Stroke • _____

300	300mm
2	2
2000	2000mm

*Refer to Table-2.

Motor option.

Nil	Without Lock
B	With Lock

①Motor type/Applicable driver

Symbol	Type	Output (Size)	Compatible interface (Driver type symbol)					
			Pulse input (A1, B1)	CC-Link (C1)	SSCNET (S1)		MECHATROLINK (M2, U2)	
					■	■/H	■	■
S2	AC servo motor (Incremental encoder)	100w (□40)	LECSA□-S1	-	-	-	-	-
S6	AC servo motor (Absolute encoder)		LECSB□-S5	LECSS□-S5	LECSS□-S5	-	-	-
T6			-	-	-	LECSS2-T5	-	-
V6			-	-	-	-	LECYM2-V5	-
			-	-	-	-	-	LECYU2-V5

*1)When (with driver) is selected, cable is included. Select cable type and length surely.

Example)
S2S2: Standard cable (2m) + driver (LECS2)

S2S2: Standard cable (2m)+drive
S2: Standard cable (2m)

52 : Standard cable (2m)
Nil : Without cable and driver

Special specification



1) Switch rail for auto switch

Table-1. Specifications

Actuator specifications	Stroke [mm]		Refer to Table-2.
	Work load [kg]	Horizontal	5 Note 2)
	Max. speed [mm/s]		2,000
	Positioning repeatability [mm]		±0.06
	Lost motion [mm]		0.1 or less
	Lead [mm]		54
	Max. acceleration/deceleration [mm/s ²]		20,000 Note 2)
	Impact resistance/ vibration resistance [m/s ²]		50 / 20
	Drive method		Belt
	Guide type		Linear guide
Switch specification	Operating temperature range [°C]		5 to 40
	Operating humidity range [%RH]		90 or less (No condensation)
	Regeneration option		Note 3)
	Applicable auto switch		D-M9 series (Not included)

Table-2. Applicable stroke

[illegible]

					FINISH		-	
					PAINT		-	
					MASS		-	
					PACKING		-	
							-	
REV/DT	DESCRIPTION				DATE	PREPARED	REV NO	MODEL
TOLERANCES: JIS B 0205					DRAWN		SCALE	
RANGE (mm) $\frac{F}{f}$ $\frac{R}{r}$ $\frac{C}{c}$ $\frac{S}{s}$					DATE		MATERIAL	THIRD ANGLE
0.5/0.05					DESIGNED		DWG NAME	
3/0.06					DATE		Electric actuator/Slider type	
6/0.030					CHECKED		DWG NO	
3/0.030					DATE		REVISION	
12/0.040					APPROVED		IC1E1FB25(S/T/V)*S-***-*****-X536	
4/0.030					DATE			
10/0.020								

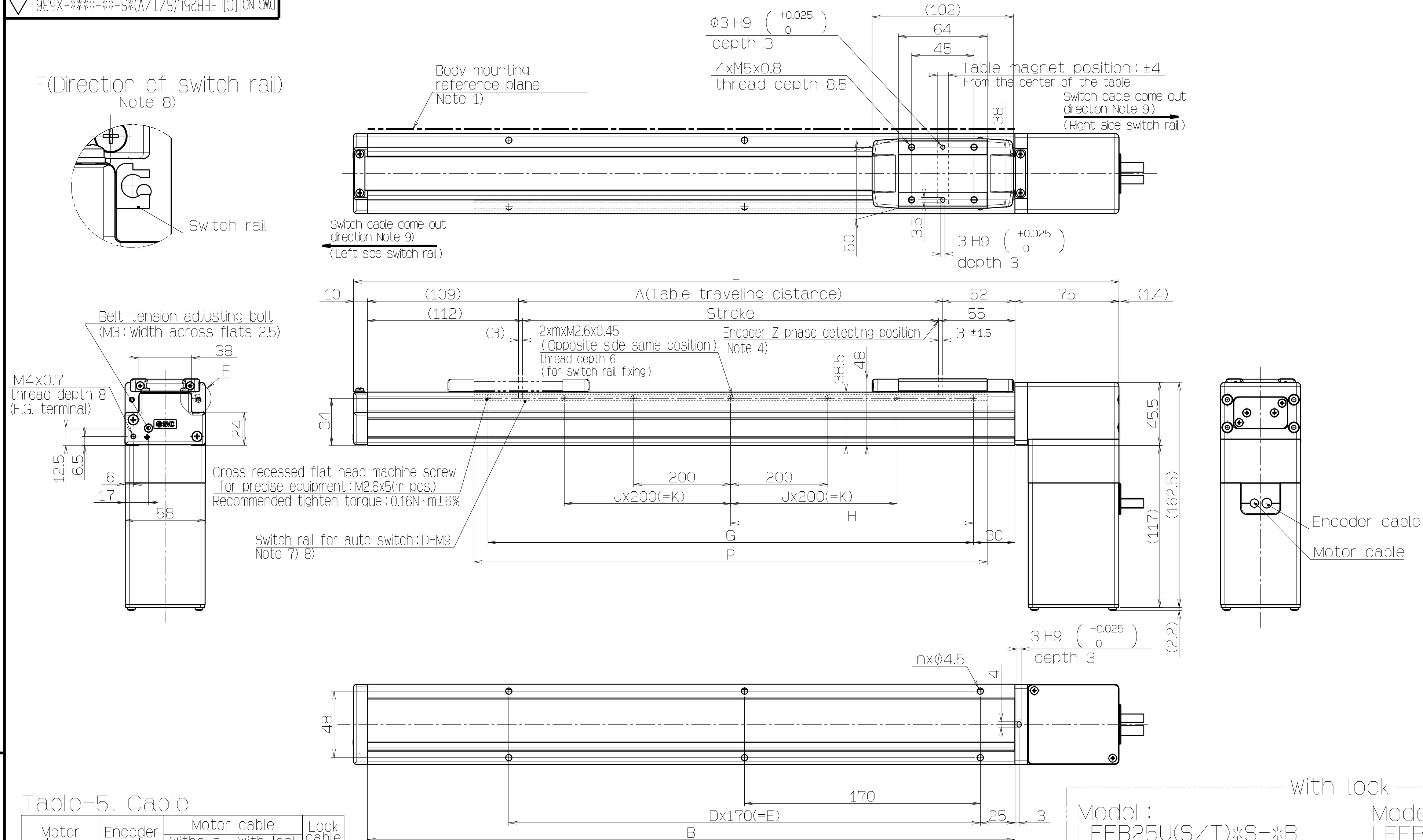


Table-5. Cable

Motor type	Encoder cable	Motor cable		Lock cable (Note)
		without lock	with lock (Note)	
S2/S6/T6	Ø7	Ø6	—	Ø4.5
V6		Ø7	Ø7	—

Note) Motor option/with lock is selected.
S2/S6/T6: Encoder・Motor・Lock/3 pcs.
V6: Encoder・Motor(with lock)/2 pcs.

Table-3. Dimensions

Model	L	A	B	n	D	E	G	H	J	K	m	P
LEFB25U*S-300*-*****-X536	552	306	467	6	2	340	350	175	-	-	3	370
LEFB25U*S-400*-*****-X536	652	406	567	8	3	510	450	225	1	200	5	470
LEFB25U*S-500*-*****-X536	752	506	667	8	3	510	550	275	1	200	5	570
LEFB25U*S-600*-*****-X536	852	606	767	10	4	680	650	325	1	200	5	670
LEFB25U*S-700*-*****-X536	952	706	867	10	4	680	750	375	1	200	5	770
LEFB25U*S-800*-*****-X536	1052	806	967	12	5	850	850	425	2	400	7	870
LEFB25U*S-900*-*****-X536	1152	906	1067	14	6	1020	950	475	2	400	7	970
LEFB25U*S-1000*-*****-X536	1252	1006	1167	14	6	1020	1050	525	2	400	7	1070
LEFB25U*S-1100*-*****-X536	1352	1106	1267	16	7	1190	1150	575	2	400	7	1170
LEFB25U*S-1200*-*****-X536	1452	1206	1367	16	7	1190	1250	625	3	600	9	1270
LEFB25U*S-1300*-*****-X536	1552	1306	1467	18	8	1360	1350	675	3	600	9	1370
LEFB25U*S-1400*-*****-X536	1652	1406	1567	20	9	1530	1450	725	3	600	9	1470
LEFB25U*S-1500*-*****-X536	1752	1506	1667	20	9	1530	1550	775	3	600	9	1570
LEFB25U*S-1600*-*****-X536	1852	1606	1767	22	10	1700	1650	825	4	800	11	1670
LEFB25U*S-1700*-*****-X536	1952	1706	1867	22	10	1700	1750	875	4	800	11	1770
LEFB25U*S-1800*-*****-X536	2052	1806	1967	24	11	1870	1850	925	4	800	11	1870
LEFB25U*S-1900*-*****-X536	2152	1906	2067	24	11	1870	1950	975	4	800	11	1970
LEFB25U*S-2000*-*****-X536	2252	2006	2167	26	12	2040	2050	1025	5	1000	13	2070

Table-6. Accessories

Part name	QTY	Remark
Switch rail	1	
Cross recessed flat head machine screw for precise equipment	m	M2.6x5 (For switch rail mounting)

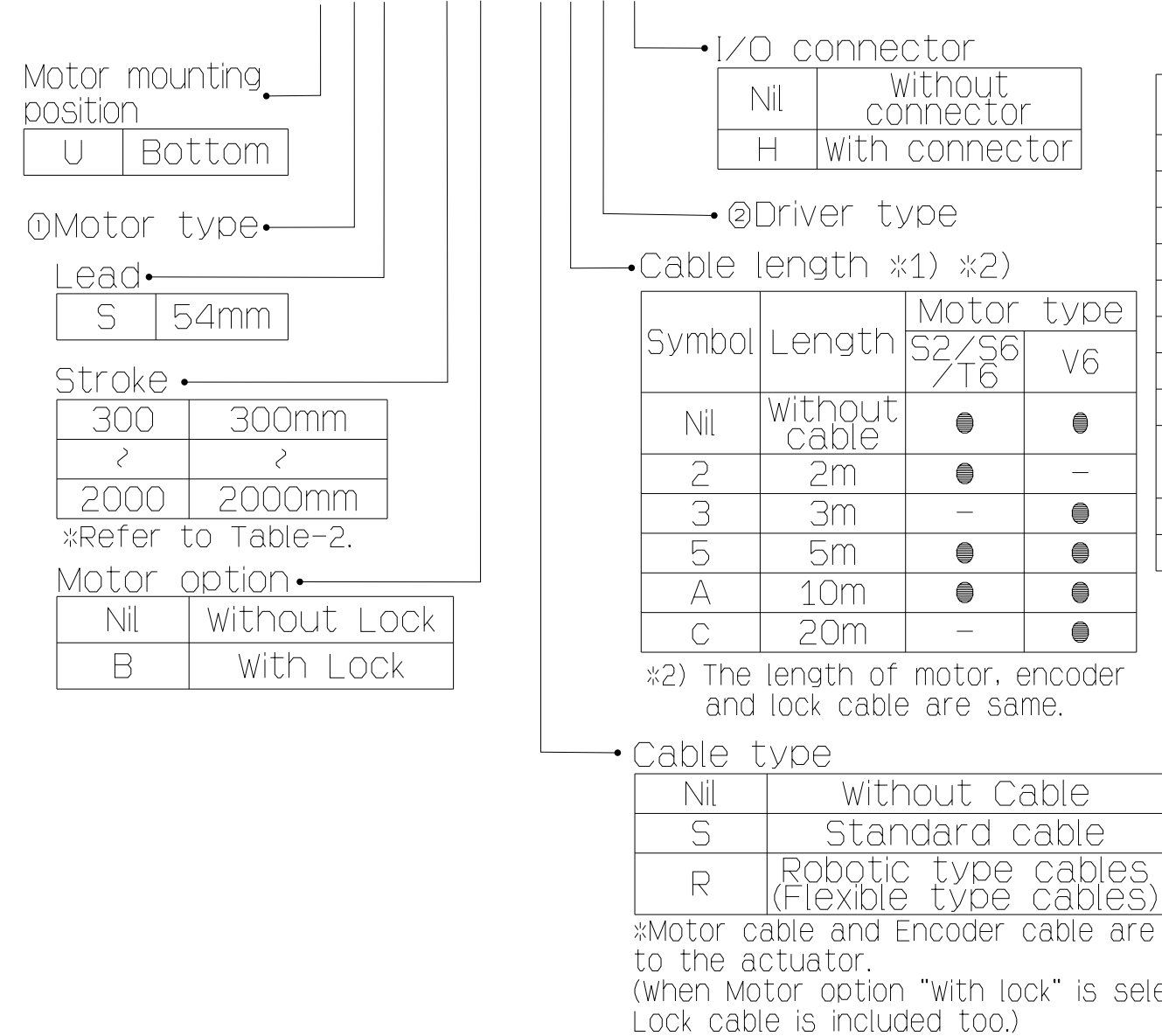
Table-4. Weight

Stroke[mm]	300	400	500	600	700	800	900	1000	1100	1200	Additional weight with lock[kg]
weight[kg]	3.16	3.41	3.66	3.91	4.16	4.41	4.66	4.91	5.16	5.41	0.3

Stroke[mm]	1300	1400	1500	1600	1700	1800	1900	2000	Additional weight with lock[kg]
weight[kg]	5.66	5.91	6.16	6.41	6.66	6.91	7.16	7.41	0.3

FINISH: 表面处理 / PAINT: 塗装 / MASS: 質量
PACKING: 包裝区分 / MATERIAL: 材質
MATERIAL SIZE: 材料寸法

How to order
LEFB25U*S-**-***-X536



①Motor type/Applicable driver

Symbol	Type	Output (Size)	Compatible interface (Driver type symbol)					
			Pulse input (A□, B□)	CC-Link (C□)	SSCNET (SD)		MECHATROLINK (M2, U2)	
					Ⅲ	Ⅲ/H	Ⅱ	Ⅲ
S2	AC servo motor (Incremental encoder)	100W (□40)	LECSA□-S1	-	-	-	-	-
S6	AC servo motor (Absolute encoder)		LECSB□-S5	LESCC□-S5	LECSS□-S5	-	-	-
T6			-	-	-	LECS2-T5	-	-
V6			-	-	-	-	LECYM2-V5	-
			-	-	-	-	-	LECYU2-V5

*1)When (with driver) is selected, cable is included. Select cable type and length surely.

Example)
S2S2: Standard cable (2m)+driver (LECSS2)
S2 : Standard cable (2m)
Nil : Without cable and driver

Special specification


1) Switch rail for auto switch

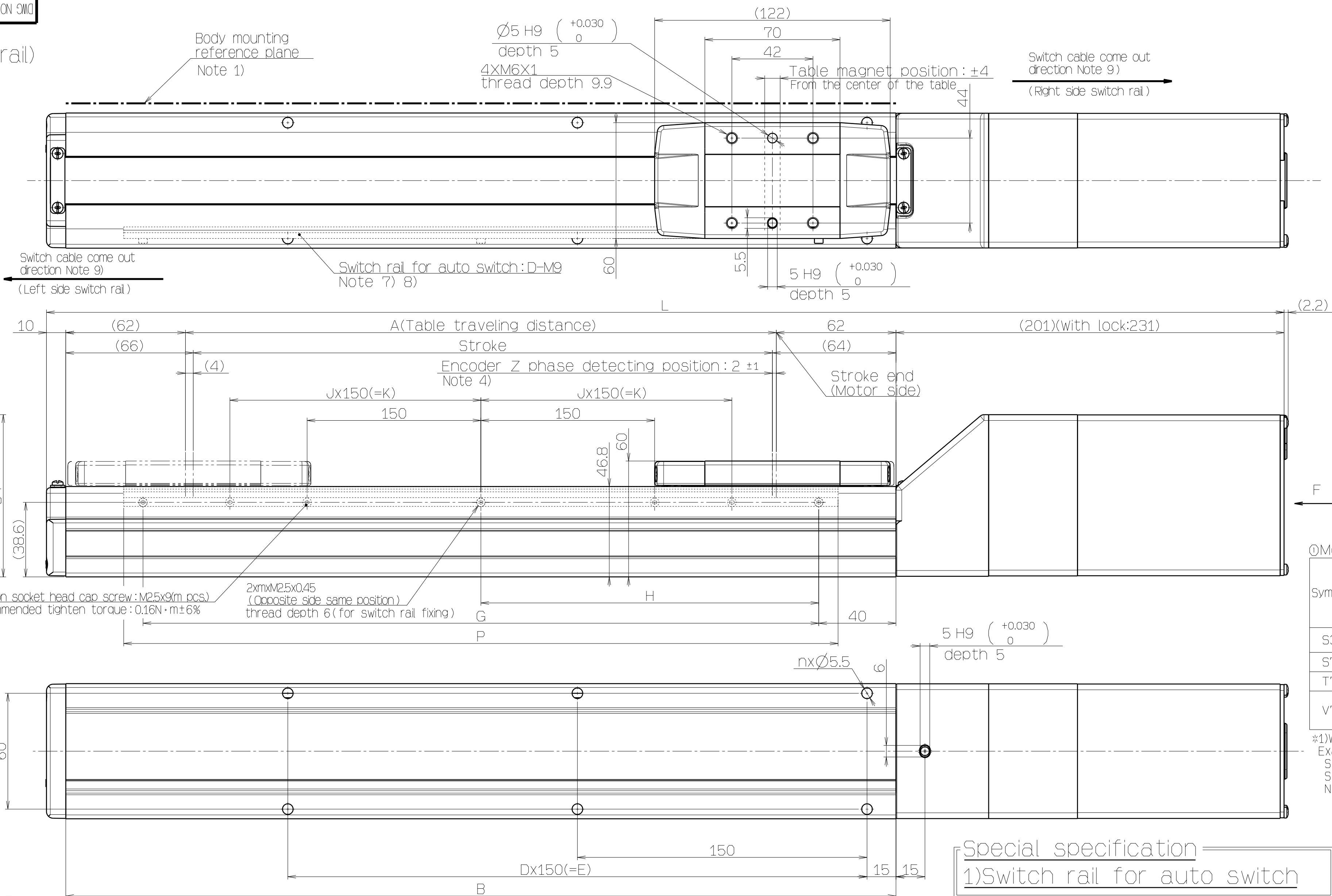
Table-1. Specifications

Actuator specifications	Stroke [mm]		Refer to Table-2.
	Work load [kg]	Horizontal	5 Note 2)
	Max. speed [mm/s]		2,000
	Positioning repeatability [mm]		±0.06
	Lost motion [mm]		0.1 or less
	Lead [mm]		54
	Max. acceleration/deceleration [mm/s ²]		20,000 Note 2)
	Impact resistance/ vibration resistance [m/s ²]		50 / 20
	Drive method		Belt
	Guide type		Linear guide
Switch specification	Operating temperature range [°C]		5 to 40
	Operating humidity range [%RH]		90 or less (No condensation)
	Regeneration option		Note 3)
Switch specification	Applicable auto switch		D-M9 series (Not included)

Table-2. Applicable stroke

[illegible]

					FINISH		-	
					PAINT		-	
					MASS		-	
					PACKING		-	
REV/ITY	DESCRIPTION				DATE	PREPARED	REV NO	
TOLERANCES JS B 0405					DRAWN		SCALE	
GRADE					Y.Suzuki		Free	
RANGE(mm)	F	C	H	DATE	31-04-2014	MODEL		
0.5-0.03	0.05	0.1	0.2	DESIGNED	T.Nakazawa	DWG NAME		
3-0.06	0.1	0.1	0.3	DATE	2014-06-23	Electric actuator/Slider type		
6-0.030	0.1	0.2	0.5	CHECKED		DWG NO		
30-0.020	0.05	0.3	0.6	DATE		[C]LEFB25U(S/T/V)*S- $\frac{0.5}{0.4}$ $\frac{0.5}{0.4}$ $\frac{0.5}{0.4}$ $\frac{0.5}{0.4}$ -X536	REVISION	
120-0.0400	0.2	0.5	1.2	APPROVED				
480-0.01000	0.3	0.8	2	DATE				
1000-0.02000	0.5	1.2	3					
DWG REC					DWG ID	AG58448300	SMC Corporation	



Model	L		A	B	n	D	E	G	H	J	K	m	P
	Without lock	With lock											
LEFS32 ²⁵⁶ 50 ²⁵⁶ 536	391	421	56	180	4	-	-	100	50	-	-	3	120
LEFS32 ²⁵⁶ 100 ²⁵⁶ 536	441	471	106	230	4	-	-	150	75	-	-	3	170
LEFS32 ²⁵⁶ 150 ²⁵⁶ 536	491	521	156	280	4	-	-	200	100	-	-	3	220
LEFS32 ²⁵⁶ 200 ²⁵⁶ 536	541	571	206	330	6	2	300	250	125	-	-	3	270
LEFS32 ²⁵⁶ 250 ²⁵⁶ 536	591	621	256	380	6	2	300	300	150	-	-	3	320
LEFS32 ²⁵⁶ 300 ²⁵⁶ 536	641	671	306	430	6	2	300	350	175	-	-	3	370
LEFS32 ²⁵⁶ 350 ²⁵⁶ 536	691	721	356	480	8	3	450	400	200	-	-	3	420
LEFS32 ²⁵⁶ 400 ²⁵⁶ 536	741	771	406	530	8	3	450	450	225	1	300	5	470
LEFS32 ²⁵⁶ 450 ²⁵⁶ 536	791	821	456	580	8	3	450	500	250	1	300	5	520
LEFS32 ²⁵⁶ 500 ²⁵⁶ 536	841	871	506	630	10	4	600	550	275	1	300	5	570
LEFS32 ²⁵⁶ 550 ²⁵⁶ 536	891	921	556	680	10	4	600	600	300	1	300	5	620
LEFS32 ²⁵⁶ 600 ²⁵⁶ 536	941	971	606	730	10	4	600	650	325	1	300	5	670
LEFS32 ²⁵⁶ 650 ²⁵⁶ 536	991	1021	656	780	12	5	750	700	350	1	300	5	720
LEFS32 ²⁵⁶ 700 ²⁵⁶ 536	1041	1071	706	830	12	5	750	750	375	2	450	7	770
LEFS32 ²⁵⁶ 750 ²⁵⁶ 536	1091	1121	756	880	12	5	750	800	400	2	450	7	820
LEFS32 ²⁵⁶ 800 ²⁵⁶ 536	1141	1171	806	930	14	6	900	850	425	2	450	7	870

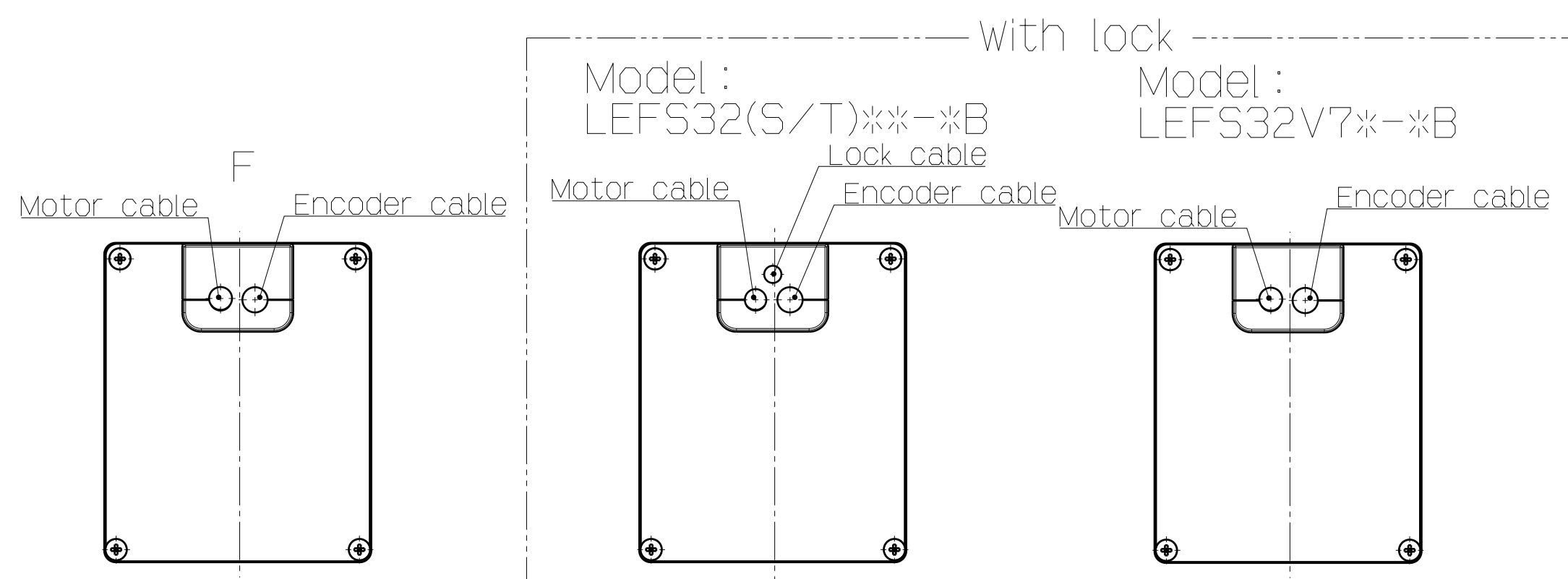
Stroke[mm]	50	100	150	200	250	300	350	400	450	500	550	600	650	700	750	800	Additional weight with lock[kg]
weight[kg]	3.40	3.70	3.90	4.10	4.30	4.50	4.70	4.90	5.10	5.30	5.50	5.70	5.90	6.10	6.30	6.50	

Motor type	Encoder cable	Motor cable	Lock Cable (Note)
		without lock	With lock (Note)
S3/S7/T7	Ø7	Ø6	–
V7		Ø7	–

Part name	QTY	Remark
Switch rail	1	
Hexagon socket head cap screw	m	M2.5x9 (For switch rail mounting)

Special specification =

1) Switch rail for auto switch



- 1)When mounting the actuator by using "Body mounting reference plane", the height of attached surface or the height of pin should be 3mm or more. (5mm in recommended height)
- 2)Max. acceleration/deceleration changes according to the work load.
Check "work load Graph=Acceleration/Deceleration Graph" of catalog.
- 3)Needed, depends on speed and work load. Check "Speed-work load Graph" on catalog.
- 4)The Z phase first detecting position from the stroke end of the motor side.
- 5)Refer to "Specifications table" of the catalog for electric specifications (motor and lock).
- 6)Please avoid loosen the screws for mounting of motor.
- 7)Switch rail is included as attachment, please mount switch rail after mounting actuator.
(Other wise switch rail will interfere body mounting holes.)
- 8)Switch rail can be used both (left and right) side. Please confirm the direction of the mounting.
- 9)There is the restriction of the coming out direction of the auto switch cable.
If the direction is wrong, the auto switch won't work correctly.
- 10)Auto switch is not included.
- 11)Unless otherwise noted along with a separate contract or agreement within the Product Specifications, the safety instructions specified in the product catalog are applied.
Please contact your local SMC Sales office for further details.

How to order
LEFS32**-**-*****-X536

Lead	
H	24mm
A	16mm
B	8mm

50	50mm
?	?
800	800mm

*Deal with per 50m

Nil	Without Lock
B	With Lock

Nil	Without Cable
S	Standard cable
R	Robotic type cables, (Flexible type cables)

*Motor cable and Encoder cable are included to the actuator.
(When Motor option "with lock" is selected, Lock cable is included too.)

Nil	Without connector
H	With connector

Symbol	Applicable driver	Power supply voltage
Nil	without driver	-
A1	LECSA1-S□	100 to 120V
A2	LECSA2-S□	200 to 230V
B1	LECSB1-S□	100 to 120V
B2	LECSB2-S□	200 to 230V
C1	LECSC1-S□	100 to 120V
C2	LECSC2-S□	200 to 230V
S1	LECSS1-S□	100 to 120V
S2	LECSS2-S□	200 to 230V
	LECSS2-T□	200 to 240V
M2	LECYM2-V□	200 to 230V
U2	LECYU2-V□	200 to 230V

Symbol	Length	Motor type S3/S7 T7	v7
Nil	Without cable	●	●
2	2m	●	—
3	3m	—	●
5	5m	●	●
A	10m	●	●
C	20m	—	●

*2) The length of motor, encoder and lock cable are same.

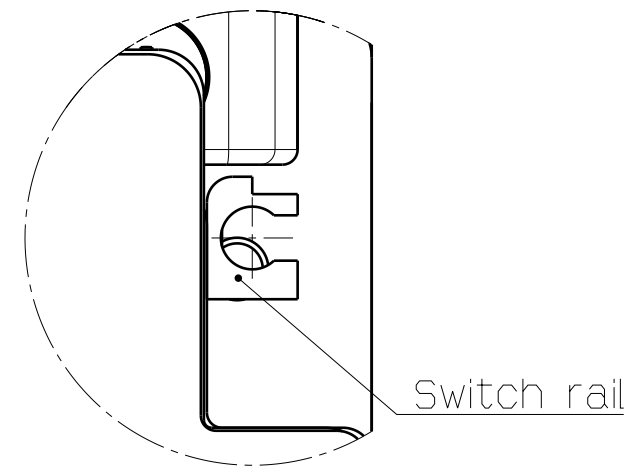
Symbol	Type	Output (Size)	Compatible interface (Driver type symbol)					
			Pulse input (A□, B□)	CC-Link (C□)	SSCNET (S□)		MECHATROLINK (M2, U2)	
					Ⅲ	Ⅲ/H	Ⅱ	Ⅲ
S3	AC servo motor (Incremental encoder)	200W (□B0)	LECSA□-S3	-	-	-	-	-
S7	LECSB□-S7		LECSS□-S7	LECSS□-S7	-	-	-	
T7	AC servo motor (Absolute encoder)		-	-	-	LECS52-T7	-	-
V7	-		-	-	-	LECYM2-V7	-	-
	-		-	-	-	-	LECYU2-V7	-

Example)
S2S2: Standard cable (2m)+driver (LECSS2)
S2 : Standard cable (2m)
Nil : without cable and driver

Actuator specifications	Stroke [mm]		50, 100, 150, 200, 250, 300, 350, 400, 450, 500, 550, 600, 650, 700, 750, 800				
	Work load [kg]		Horizontal		30	40	45
			Vertical		5	10	20
	Max. speed [mm/s]	Stroke range	to 500		1500	1000	500
			501 to 600		1200	800	400
			601 to 700		930	620	310
	701 to 800		750	500	250		
	Pushing speed of return to origin [mm/s]		30 or less				
	Max. acceleration/deceleration [mm/s ²]		20,000 (Refer to catalog for limit according to work load and duty ratio.)				
	Positioning repeatability [mm]		±0.02				
	Lost motion [mm]		0.1 or less				
	Lead [mm]		24	16	8		
Impact resistance/ vibration resistance [m/s ²]		50 / 20					
Drive method		Ball screw					
Guide type		Linear guide					
Operating temperature range [°C]		5 to 40					
Operating humidity range [%RH]		90 or less (No condensation)					
Regeneration option		Note 3)					
Switch specification	Applicable auto switch		D-M9 series (Not included)				

[illegible]

F(Direction of switch rail)
Note 8)



Belt tension adjusting bolt
(M4:Width across flats 7)

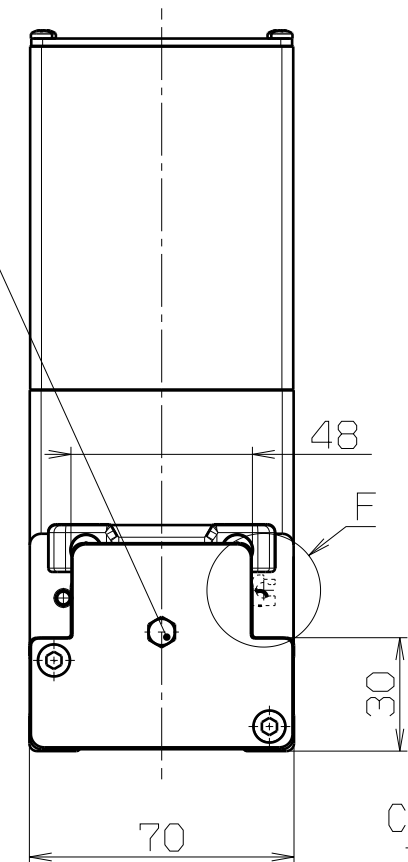


Table-5. Cable

Motor type	Encoder cable	Motor cable without lock	Motor cable with lock (Note)	Lock cable (Note)
S3/S7/T7	Φ7	Φ6	Φ7	Φ4.5
V7		Φ7	Φ7	-

Note) Motor option/with lock is selected.
S3/S7/T7:Encoder・Motor・Lock/3 pcs.
V7:Encoder・Motor(with lock)/2 pcs.

Table-6. Accessories

Part name	QTY	Remark
Switch rail	1	
Cross recessed flat head machine screw for precise equipment	m	M2.6x5 (For switch rail mounting)

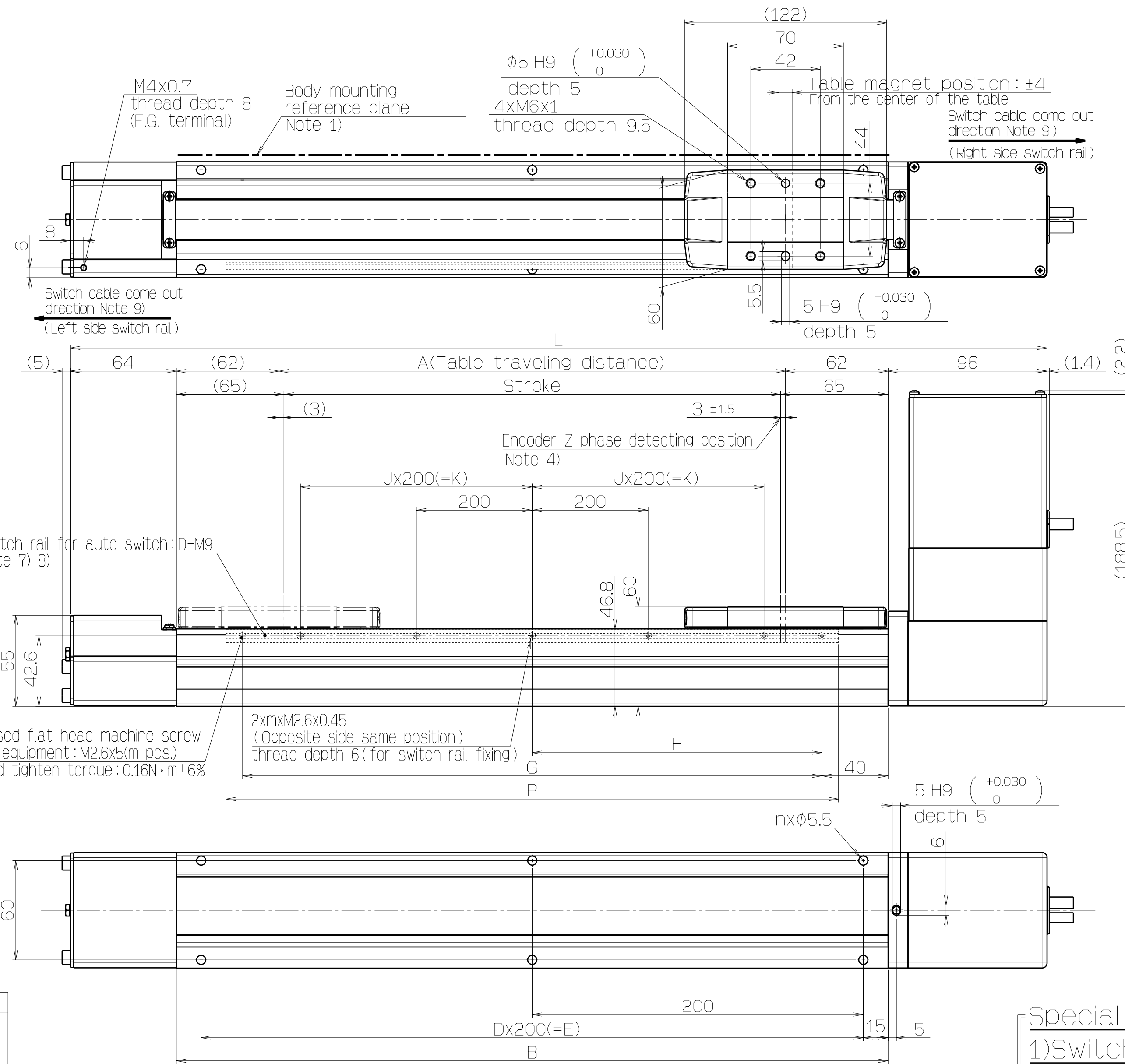
Table-3. Dimensions

Model	L	A	B	n	D	E	G	H	J	K	m	P
LEFB32*S-300*-****-X536	590	306	430	6	2	400	350	175	-	-	3	370
LEFB32*S-400*-****-X536	690	406	530	6	2	400	450	225	1	200	5	470
LEFB32*S-500*-****-X536	790	506	630	8	3	600	550	275	1	200	5	570
LEFB32*S-600*-****-X536	890	606	730	8	3	600	650	325	1	200	5	670
LEFB32*S-700*-****-X536	990	706	830	10	4	800	750	375	1	200	5	770
LEFB32*S-800*-****-X536	1090	806	930	10	4	800	850	425	2	400	7	870
LEFB32*S-900*-****-X536	1190	906	1030	12	5	1000	950	475	2	400	7	970
LEFB32*S-1000*-****-X536	1290	1006	1130	12	5	1000	1050	525	2	400	7	1070
LEFB32*S-1100*-****-X536	1390	1106	1230	14	6	1200	1150	575	2	400	7	1170
LEFB32*S-1200*-****-X536	1490	1206	1330	14	6	1200	1250	625	3	600	9	1270
LEFB32*S-1300*-****-X536	1590	1306	1430	16	7	1400	1350	675	3	600	9	1370
LEFB32*S-1400*-****-X536	1690	1406	1530	16	7	1400	1450	725	3	600	9	1470
LEFB32*S-1500*-****-X536	1790	1506	1630	18	8	1600	1550	775	3	600	9	1570
LEFB32*S-1600*-****-X536	1890	1606	1730	18	8	1600	1650	825	4	800	11	1670
LEFB32*S-1700*-****-X536	1990	1706	1830	20	9	1800	1750	875	4	800	11	1770
LEFB32*S-1800*-****-X536	2090	1806	1930	20	9	1800	1850	925	4	800	11	1870
LEFB32*S-1900*-****-X536	2190	1906	2030	22	10	2000	1950	975	4	800	11	1970
LEFB32*S-2000*-****-X536	2290	2006	2130	22	10	2000	2050	1025	5	1000	13	2070
LEFB32*S-2500*-****-X536	2790	2506	2630	28	13	2600	2550	1275	6	1200	15	2570

Table-4. Weight

Stroke[mm]	300	400	500	600	700	800	900	1000	1100	1200	Additional weight with lock[kg]
weight[kg]	4.90	5.25	5.60	5.95	6.30	6.65	7.00	7.35	7.70	8.05	0.75

Stroke[mm]	1300	1400	1500	1600	1700	1800	1900	2000	2500	Additional weight with lock[kg]
weight[kg]	8.40	8.75	9.10	9.45	9.80	10.15	10.50	10.85	12.60	0.75



Special specification
1)Switch rail for auto switch

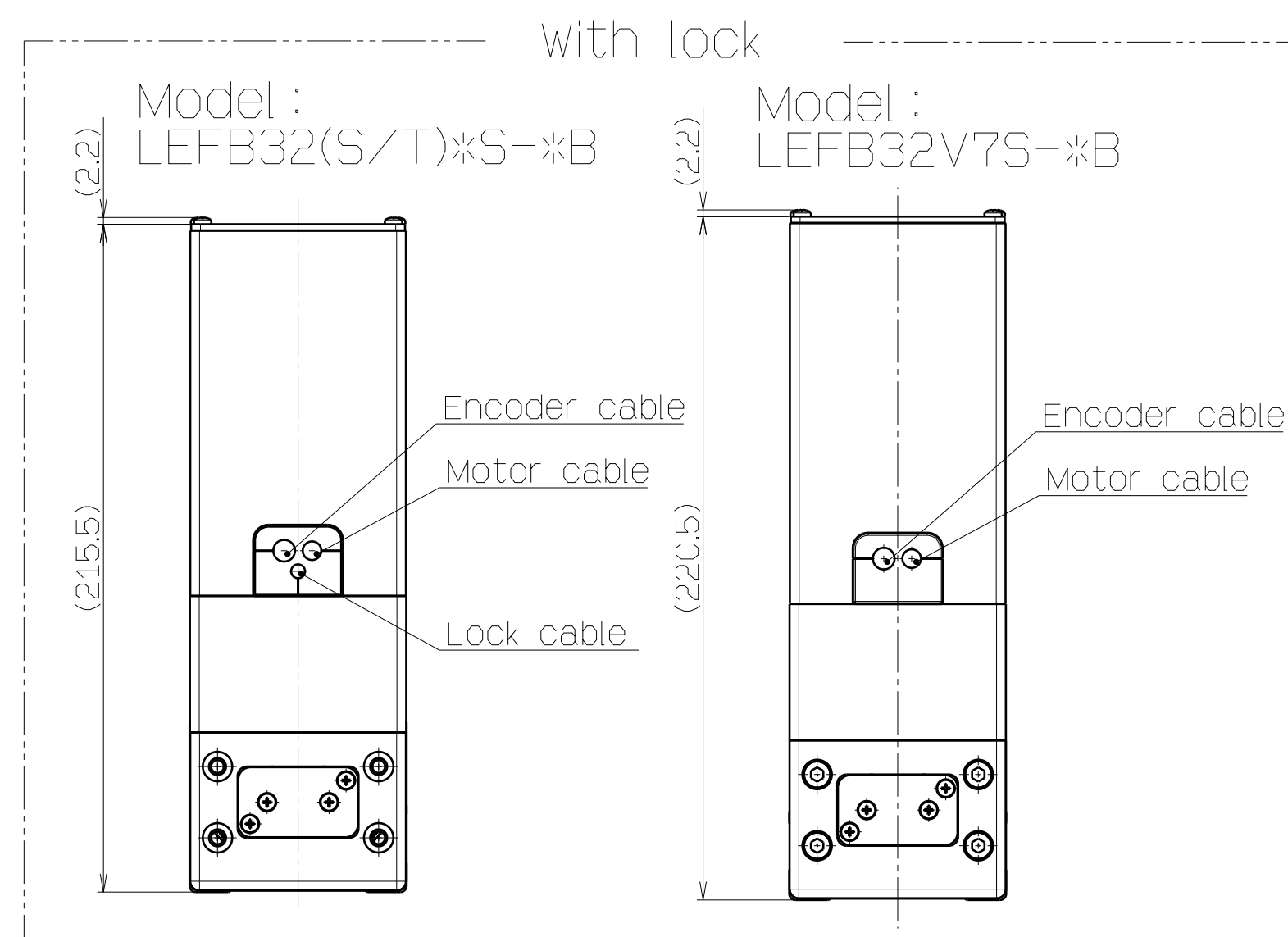


Table-2. Applicable stroke

300	400	500	600	700	800	900	1000	1100	1200
●	●	●	●	●	●	●	●	●	●
1300	1400	1500	1600	1700	1800	1900	2000	2500	●
●	●	●	●	●	●	●	●	●	●

How to order
LEFB32*S-****-X536

@Motor type

Lead	
S	54mm

Stroke

300	300mm
2	2
2500	2500mm

*Refer to Table-2.

Motor option

Nil	Without Lock
B	With Lock

Cable type

Nil	Without Cable
S	Standard cable
R	Robotic type cables (Flexible type cables)

*Motor cable and Encoder cable are included to the actuator.
(When Motor option "with lock" is selected. Lock cable is included too.)

@Motor type/Applicable driver

Symbol	Type	Output (Size)	Compatible interface (Driver type symbol)					
			Pulse input (A□, B□)	CC-Link (C□)	SSCNET (S□)		MECHATROLINK (M2, U2)	
S3	AC servo motor (Incremental encoder)	200W (D60)	LECSA□-S3	-	-	-	-	-
S7	AC servo motor (Absolute encoder)		LECSB□-S7	LECSCD-S7	LECSSD-S7	-	-	-
T7			-	-	LECSS2-T7	-	-	
V7			-	-	-	LECYM2-V7	-	-
			-	-	-	-	LECYU2-V7	-

*1)When (with driver) is selected, cable is included. Select cable type and length surely.

Example)
S2S2:Standard cable (2m)+driver (LECSS2)
S2:Standard cable (2m)
Nil:Without cable and driver

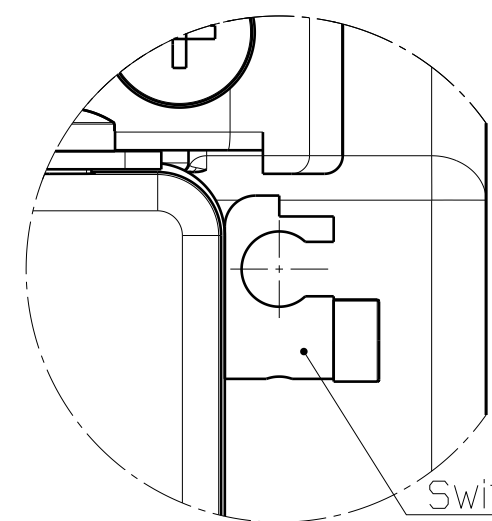
Table-1. Specifications

Actuator specifications	Stroke [mm]	Refer to Table-2.
	Work load [kg]	Horizontal 15 Note 2)
Switch specification	Max. speed [mm/s]	2000
	Positioning repeatability [mm]	±0.06
	Lost motion [mm]	0.1 or less
	Lead [mm]	54
	Max. acceleration/deceleration [mm/s ²]	20,000 Note 2)
	Impact resistance/vibration resistance [m/s ²]	50 / 20
	Drive method	Belt
	Guide type	Linear guide
	Operating temperature range [°C]	5 to 40
	Operating humidity range [%RH]	90 or less (No condensation)
Switch specification	Regeneration option	Note 3)
	Applicable auto switch	D-M9 series (Not included)

Note

- 1)When mounting the actuator by using "Body mounting reference plane", the height of attached surface or the height of pin should be 3mm or more. (5mm in recommended height)
- 2)Max. acceleration/deceleration changes according to the work load.
Check "work load Graph-Acceleration/Deceleration Graph" of catalog.
- 3)Needed, depends on speed and work load. Check "Speed-work load Graph" on catalog.
- 4)The Z phase first detecting position from the stroke end of the motor side.
- 5)Refer to "Specifications table" of the catalog for electric specifications (motor and lock).
- 6)Please avoid loosen the screws for mounting of motor.
- 7)Switch rail is included as attachment, please mount switch rail after mounting actuator.
(Other wise switch rail will interfere body mounting holes.)
- 8)Switch rail can be used both (left and right) side. Please confirm the direction of the mounting.
- 9)There is the restriction of the coming out direction of the auto switch cable.
If the direction is wrong, the auto switch won't work correctly.
- 10)Auto switch is not included.
- 11)Unless otherwise noted along with a separate contract or agreement within the Product Specifications, the safety instructions specified in the product catalog are applied.
Please contact your local SMC Sales office for further details.

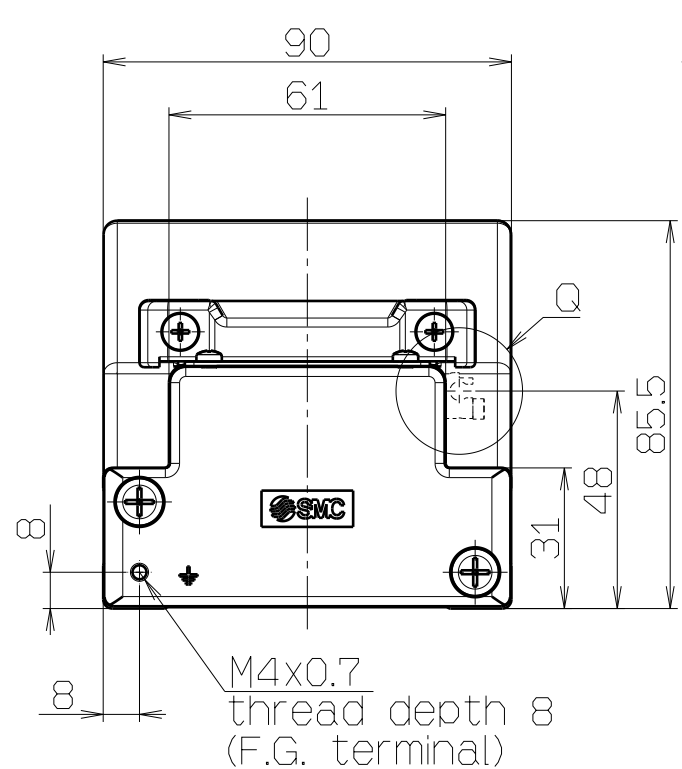
REV. NO.	DESCRIPTION	DATE	PREPARED	REV. NO.	SCALE	FINISH	PAINT	MASS	PACKING	MATERIAL	MODEL	QTY
1	TOLERANCES JS B 0.025	2014-06-23	Y.SUZUKI	1	Free	-	-	-	-	-	-	-
2	RANGE (mm)	2014-06-23	T.NAKAZAWA	2		-	-	-	-	-	-	-
3	0.5<D<3	0.05	0.1	0.2		-	-	-	-	-	-	-
4	3<D<6	0.05	0.1	0.3		-	-	-	-	-	-	-
5	6<D<30	0.1	0.2	0.5		-	-	-	-	-	-	-
6	30<D<120	0.05	0.3	0.8		-	-	-	-	-	-	-
7	120<D<400	0.2	0.5	1.2		-	-	-	-	-	-	-
8	400<D<1000	0.3	0.8	2		-	-	-	-	-	-	-
9	1000<D<2000	0.5	1.2	3		-	-	-	-	-	-	-



Body mounting reference plane
Note 2)

Technical drawing of the bottom view of a table magnet. The drawing shows a rectangular plate with dimensions 170mm by 106mm. There are four mounting holes, each with a diameter of 6.9mm and a depth of 7mm. The distance between the centers of the holes is 60mm. The mounting holes are 4xM8x1.25 with a thread depth of 13mm. The table magnet is positioned +4mm from the center of the table. A switch cable comes out from the right side of the magnet, as indicated by Note 9.

Switch cable come out
direction Note 9)
← (Left side switch rail)



Technical drawing of the M253.5 series linear guide, showing front and side views with detailed dimensions and callouts.

Front View Dimensions:

- Overall length: (223.5) (with lock: 253.5)
- Stroke: A (Table traveling distance)
- Width: 13 (top), 44 (bottom)
- Mounting hole spacing: (86) (90)
- Encoder Z phase detecting position: 2 ± 1
- Switch rail for auto switch: D-M9 (Note 7) B)
- Encoder Z phase detecting position: 53.8 (68)
- Mounting hole spacing: 150 (Jx150(=K))
- Mounting hole spacing: 150 (Jx150(=K))
- Mounting hole spacing: 64
- Mounting hole spacing: 64

Side View Dimensions:

- Overall height: 68
- Mounting hole spacing: 150 (Dx150(=E))
- Mounting hole spacing: 60
- Mounting hole spacing: 15
- Mounting hole spacing: 6 H9 (+0.030 / 0) depth 6
- Mounting hole spacing: nx Ø6.6

Callouts:

- 2xmxM2.5x0.45 (Opposite side same position) thread depth 6 (for switch rail fixing)
- Hexagon socket head cap screw: M2.5x9 (m pcs.) Recommended tighten torque: 0.16N·m ± 6%

Special specification =

1) Switch rail for auto switch

Table-5. Accessories

Part name	QTY	Remark
Switch rail	1	
Hexagon socket head cap screw	m	M2.5x9 (For switch rail mounting)

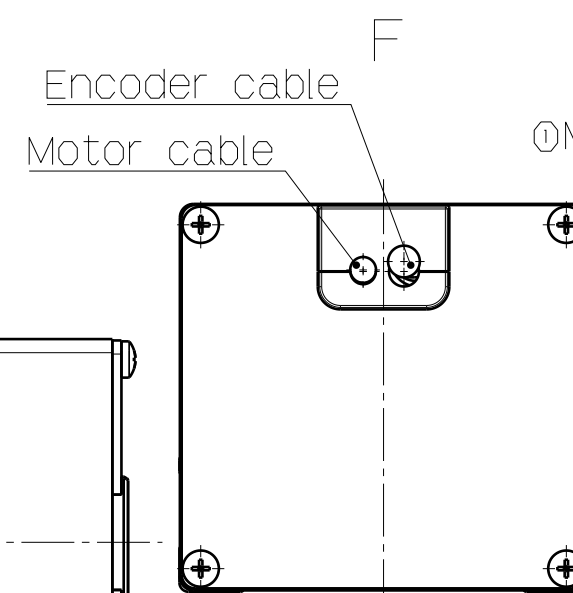
Model	L		A	B	n	D	E	G	H	J	K	m	P
	without lock	with lock											
LEFS40***-150*-****-X536	564.5	594.5	156	328	4	-	150	200	100	-	-	3	220
LEFS40***-200*-****-X536	614.5	644.5	206	378	6	2	300	250	125	-	-	3	270
LEFS40***-250*-****-X536	664.5	694.5	256	428	6	2	300	300	150	-	-	3	320
LEFS40***-300*-****-X536	714.5	744.5	306	478	6	2	300	350	175	-	-	3	370
LEFS40***-350*-****-X536	764.5	794.5	356	528	8	3	450	400	200	-	-	3	420
LEFS40***-400*-****-X536	814.5	844.5	406	578	8	3	450	450	225	1	150	5	470
LEFS40***-450*-****-X536	864.5	894.5	456	628	8	3	450	500	250	1	150	5	520
LEFS40***-500*-****-X536	914.5	944.5	506	678	10	4	600	550	275	1	150	5	570
LEFS40***-550*-****-X536	964.5	994.5	556	728	10	4	600	600	300	1	150	5	620
LEFS40***-600*-****-X536	1014.5	1044.5	606	778	10	4	600	650	325	1	150	5	670
LEFS40***-650*-****-X536	1064.5	1094.5	656	828	12	5	750	700	350	1	150	5	720
LEFS40***-700*-****-X536	1114.5	1144.5	706	878	12	5	750	750	375	2	300	7	770
LEFS40***-750*-****-X536	1164.5	1194.5	756	928	12	5	750	800	400	2	300	7	820
LEFS40***-800*-****-X536	1214.5	1244.5	806	978	14	6	900	850	425	2	300	7	870
LEFS40***-850*-****-X536	1264.5	1294.5	856	1028	14	6	900	900	450	2	300	7	920
LEFS40***-900*-****-X536	1314.5	1344.5	906	1078	14	6	900	950	475	2	300	7	970
LEFS40***-950*-****-X536	1364.5	1394.5	956	1128	16	7	1050	1000	500	2	300	7	1020
LEFS40***-1000*-****-X536	1414.5	1444.5	1006	1178	16	7	1050	1050	525	3	450	9	1070

Table-3. Weight

Stroke[mm]	150	200	250	300	350	400	450	500	550	600	650	700	750	800	850	900	950	1000	Additional weight with lock[kg]
weight[kg]	6.02	6.30	6.58	6.85	7.15	7.45	7.71	8.00	8.27	8.45	8.83	9.10	9.40	9.65	9.96	10.25	10.52	10.80	

PING NAME

How to order
LEFS40**-**-*****-X536



①Motor type

H	30mm
A	20mm
B	10mm

Stroke	
150	150mm
?	?
1000	1000mm

*Deal with per 50mm

Motor option

Nil	Without Lock
B	With Lock

Cable type

Nil	Without Cable
S	Standard cable
R	Robotic type cables (Flexible type cables)

*Motor cable and Encoder cable are included to the actuator.
(When Motor option "with lock" is selected, Lock cable is included too.)

①Motor type/Applicable driver

Symbol	Type	Output (Size)	Compatible interface (Driver type symbol)					
			Pulse input (A□, B□)	CC-Link (C□)	SSCNET (S□)		MECHATROLINK (M2, U2)	
					Ⅲ	Ⅲ / H	Ⅱ	Ⅲ
S4	AC servo motor (Incremental encoder)	400w (D60)	LECSA□-S4	-	-	-	-	
S8			LECSB□-S8	LECSS□-S8	-	-	-	
T8	-		-	LECSS2-T8	-	-		
V8	AC servo motor (Absolute encoder)		-	-	-	LECYM2-V8	-	
			-	-	-	-	LECYU2-V8	
			-	-	-	-	-	
-		-	-	-	-			

*1)When (with driver) is selected, cable is included. Select cable type and length surely.

Example)

S2S2	: Standard cable (2m)+driver (LECSS2)
S2	: Standard cable (2m)
Nil	: without cable and driver

Table-4. Cable

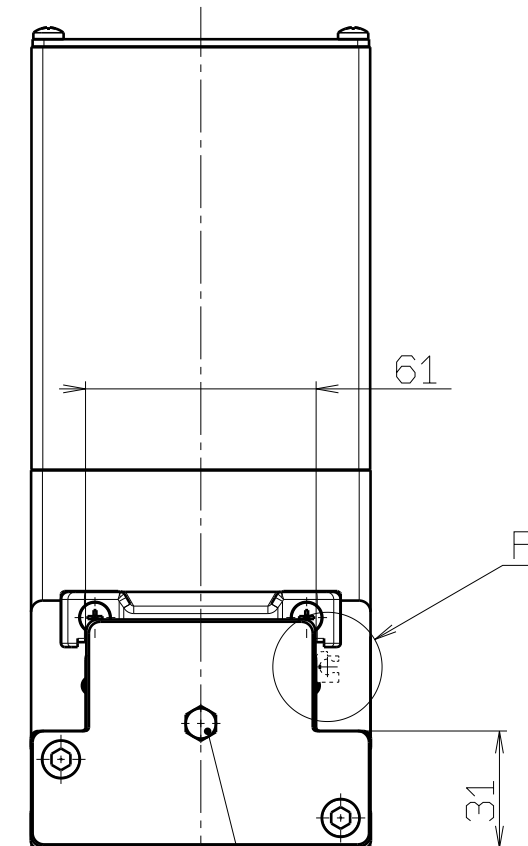
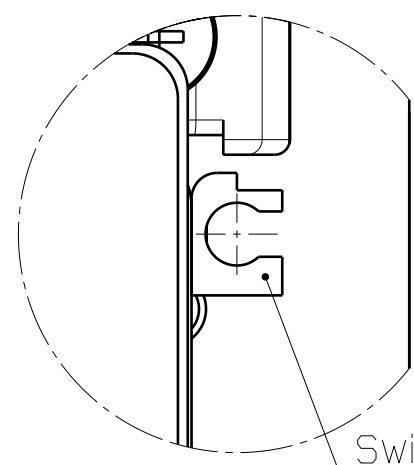
Motor type	Encoder cable	Motor cable		Lock Cable (Note)
		without lock	with lock (Note)	
S4/S8/T8	Ø7	Ø6	—	Ø4.5
V8		Ø7	Ø7	—

Note) Motor option/with lock is selected.
S4/S8/T8 : Encoder・Motor・Lock/3 pcs.
V8 : Encoder・Motor(with lock)/2 pcs.

Table-1. Actuator specifications

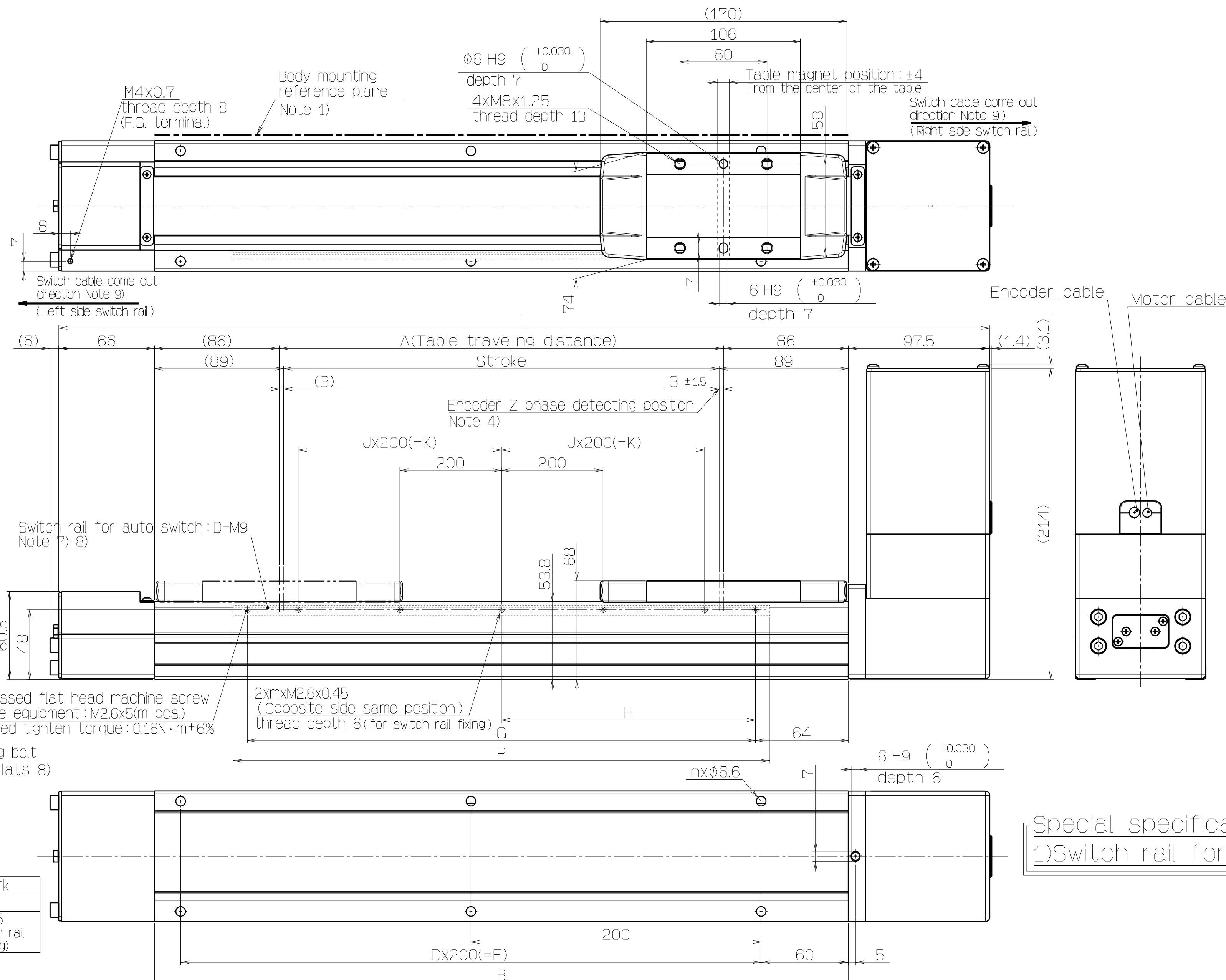
Actuator specifications	Stroke [mm]		150, 200, 250, 300, 350, 400, 450, 500, 550, 600, 650, 700, 750, 800, 850, 900, 950, 1000			
	work load [kg]	Horizontal	30	50	60	
		Vertical	7	15	30	
	Max. speed [mm/s]	Stroke range	to 600	1500	1000	500
			601 to 700	1410	940	470
			701 to 800	1140	760	380
			801 to 900	930	620	310
			901 to 1000	780	520	260
	Pushing speed of return to origin [mm/s]		30 or less			
	Max. acceleration/deceleration [mm/s ²]		20,000 (Refer to catalog for limit according to work load and duty ratio.)			
Positioning repeatability [mm]		±0.02				
Lost motion [mm]		0.1 or less				
Switch specification	Lead [mm]		30	20	10	
	Impact resistance/ vibration resistance [m/s ²]		50 / 20			
	Drive method		Ball screw			
	Guide type		Linear guide			
	Operating temperature range [°C]		5 to 40			
	Operating humidity range [%RH]		90 or less (No condensation)			
	Regeneration option		Note 3)			
	Applicable auto switch		D-M9 series (Not included)			

TOLERANCES UNLESS OTHERWISE SPECIFIED		DRAWN		SCALE		FINISH		PAINT		MASS		PACKING	
RANGE (mm)		DATE		Free		MATERIAL		MATERIAL		THIRD ANGLE			
0.5-0.53		DESIGNED		DWG NAME		ELECTRIC ACTUATOR / SLIDER TYPE		REVISION					
3-0.56		DATE		DWG NO		ICLFS40(S/T/V)		X536					
6-0.53		CHECKED		APPROVED		DATE							
30-0.56		DATE		DWG ID		AG58449000		SMC CORPORATION					
120-0.56		APPROVED		DATE									
500-0.56		DATE											
1000-0.56													



Cross recessed flat head machine screw
for precise equipment:M2.6x5(m pcs.)
Recommended tighten torque:0.16N·m±6%

Belt tension adjusting bolt
(M5: width across flats 8)



Part name	QTY	Remark
Switch rail	1	
Cross recessed flat head machine screw for precise equipment	m	M2.6x5 (For switch rail mounting)

Model	L	A	B	n	D	E	G	H	J	K	m	P
LEFB40*S-300*-****-X536	641.5	306	478	6	2	400	350	175	-	-	3	370
LEFB40*S-400*-****-X536	741.5	406	578	6	2	400	450	225	1	200	5	470
LEFB40*S-500*-****-X536	841.5	506	678	8	3	600	550	275	1	200	5	570
LEFB40*S-600*-****-X536	941.5	606	778	8	3	600	650	325	1	200	5	670
LEFB40*S-700*-****-X536	1041.5	706	878	10	4	800	750	375	1	200	5	770
LEFB40*S-800*-****-X536	1141.5	806	978	10	4	800	850	425	2	400	7	870
LEFB40*S-900*-****-X536	1241.5	906	1078	12	5	1000	950	475	2	400	7	970
LEFB40*S-1000*-****-X536	1341.5	1006	1178	12	5	1000	1050	525	2	400	7	1070
LEFB40*S-1100*-****-X536	1441.5	1106	1278	14	6	1200	1150	575	2	400	7	1170
LEFB40*S-1200*-****-X536	1541.5	1206	1378	14	6	1200	1250	625	3	600	9	1270
LEFB40*S-1300*-****-X536	1641.5	1306	1478	16	7	1400	1350	675	3	600	9	1370
LEFB40*S-1400*-****-X536	1741.5	1406	1578	16	7	1400	1450	725	3	600	9	1470
LEFB40*S-1500*-****-X536	1841.5	1506	1678	18	8	1600	1550	775	3	600	9	1570
LEFB40*S-1600*-****-X536	1941.5	1606	1778	18	8	1600	1650	825	4	800	11	1670
LEFB40*S-1700*-****-X536	2041.5	1706	1878	20	9	1800	1750	875	4	800	11	1770
LEFB40*S-1800*-****-X536	2141.5	1806	1978	20	9	1800	1850	925	4	800	11	1870
LEFB40*S-1900*-****-X536	2241.5	1906	2078	22	10	2000	1950	975	4	800	11	1970
LEFB40*S-2000*-****-X536	2341.5	2006	2178	22	10	2000	2050	1025	5	1000	13	2070
LEFB40*S-2500*-****-X536	2841.5	2506	2678	28	13	2600	2550	1275	6	1200	15	2570
LEFB40*S-3000*-****-X536	3341.5	3006	3178	32	15	3000	3050	1525	7	1400	17	3070

Stroke[mm]	300	400	500	600	700	800	900	1000	1100	1200	Additional weight with lock[kg]
weight[kg]	7.3	7.75	8.2	8.65	9.10	9.55	10.00	10.45	10.90	11.35	

Stroke[mm]	1300	1400	1500	1600	1700	1800	1900	2000	2500	3000	Additional weight with lock[kg]
weight[kg]	11.80	12.25	12.70	13.15	13.60	14.05	14.50	14.95	17.20	19.45	

[illegible]

Motor type	Encoder cable	Motor cable		Lock cable (Note)
		without lock	with lock (Note)	
S4/S8/T8	Ø7	Ø6	–	Ø4.5
V8		Ø7	Ø7	–

Note) Motor option/with lock is selected.
S4/S8/T8 : Encoder・Motor・Lock/3 pcs.
V8 : Encoder・Motor(with lock)/2 pcs.

①Motor type _____
Lead _____

S	54mm
---	------

Stroke	
300	300mm
?	?
3000	3000mm

*Refer to Table-2.

Motor option _____	
Nil	without Lock
B	With Lock

Cable type—	
Nil	without Cable
S	Standard cable
R	Robotic type cables (Flexible type cables)

*Motor cable and Encoder cable are included to the actuator.
(When Motor option "With lock" is selected, Lock cable is included too.)

①Motor type/Applicable driver

Symbol	Type	Output (Size)	Compatible interface (Driver type symbol)					
			Pulse input (A□, B□)	CC-Link (C□)	SSCNET (SD)		MECHATROLINK (M2, U2)	
					■	■ / H	■	■
S4	AC servo motor (Incremental encoder)	400W (□60)	LECSA□-S4	-	-	-	-	
S8			LECSB□-S8	LECSS□-S8	-	-	-	
T8	-		-	LECSS2-T8	-	-		
V8	AC servo motor (Absolute encoder)		-	-	-	LECYM2-V8	-	
			-	-	-	-	LECYU2-V8	
			-	-	-	-	-	

*1)When (with driver) is selected, cable is included. Select cable type and length surely.

Example)
S2S2: Standard cable (2m)+driver (LECSS2)

S2S2 : Standard cable (2m) + driver
S2 : Standard cable (2m)
Nil : Without cable and driver

Nil . without cable and driver

Actuator specifications	Stroke [mm]		Refer to Table-2.
	work load [kg]	Horizontal	25 Note 2)
	Max. speed [mm/s]		2,000
	Positioning repeatability [mm]		±0.06
	Lost motion [mm]		0.1 or less
	Lead [mm]		54
	Max. acceleration/deceleration [mm/s ²]		20,000 Note 2)
	Impact resistance/ vibration resistance [m/s ²]		50 / 20
	Drive method		Belt
	Guide type		Linear guide
Switch specification	Operating temperature range [°C]		5 to 40
	Operating humidity range [%RH]		90 or less (No condensation)
	Regeneration option		Note 3)
Switch specification	Applicable auto switch		D-M9 series (Not included)

Note

1)when mounting the actuator by using "Body mounting reference plane", the height of attached surface or the height of pin should be 3mm or more. (5mm in recommended height)

2) Max. acceleration/deceleration changes according to the work load.

Check "Work load Graph-Acceleration/Deceleration Graph" of catalog.

3) Needed, depends on speed and work load. Check "Speed-work load Gr

4) The 3 phase first detecting position from the stroke end of the motor side

4) The \angle phase first detecting position from the stroke end of the motor side.

5) Refer to "Specifications table" of the catalog for electrical

6) Please avoid loosen the screws for mounting of motor.

7) Switch rail is included as attachment, please mount switch rail after mounting actuator.

(Other wise switch rail will interfere body mounting holes.)

8) Switch rail can be used both (left and right) side. Please confirm the direction of the mounting.

8)Switch Fall can be used both (left and right) side. Please confirm the direction

9) There is the restriction of the coming out direction of the auto
If the direction is wrong, the auto switch won't work correctly.

If the direction is wrong, the auto switch won't work correctly.

10)Auto switch is not included.

11) Unless otherwise noted along with a separate contract or agreement within the Product

Specifications; the safety instructions specified in the product catalog are applied.

Please contact your local SMC Sales office for further details.



							FINISH	-			
							PAINT	-			
							MASS				
							PACKING	-			
REV	QTY	DESCRIPTION			DATE	PREPARED	REV	NO	MATERIAL	MODEL	QTY
TOLERANCES JS B 0405					DRAWN	Y.Suzuki		SCALE		THIRD ANGLE	
RANGE (mm)					GRADE	2014-06-23		Free			
					F	H	K	C			
0.5-0.03					0.05	0.1	0.2				
3-0.06					0.05	0.1	0.5				
6-0.10					0.1	0.2	0.5				
30-0.15					0.15	0.3	0.5				
120-0.20					0.2	0.5	1.2				
480-0.30					0.3	0.6	1.2				
1000-0.50					0.5	1.2	2				
					APPROVED			DWG NO		REVISION	
					DATE			ICLEFB40(S/T/W)*S- $\frac{1}{2}$ W- $\frac{1}{2}$ W-X536			

Table-3. DimensionsTable-4. WeightTable-2. Applicable strokeTable-5. Cable

Note) Motor option/with lock is selected.
S4/S8/T8: Encoder・Motor・Lock/3 pcs.
V8 : Encoder・Motor(with lock)/2 pcs.

①Motor type

Lead	_____
S	54mm

Stroke	
300	300mm
?	?
3000	3000mm

*Refer to Table-2

Motor option ———	
Nil	Without Lock
B	With Lock

Cable type

Nil	Without Cable
S	Standard cable
R	Robotic type cables (Flexible type cables)

*Motor cable and Encoder cable are included to the actuator.
(When Motor option "With lock" is selected, Lock cable is included too.)

①Motor type/Applicable driver

*1)when (with driver) is selected, cable is included. Select cable type and length surely.

Example)
S2S2: Standard cable (2m)+driver (LECSS2)
S2 : Standard cable (2m)
Nil : Without cable and driver

Table-1. Actuator specifications

Note

- 1)When mounting the actuator by using "Body mounting reference plane", the height of attached surface or the height of pin should be 3mm or more. (5mm in recommended height)
- 2)Max. acceleration/deceleration changes according to the work load.
Check "Work load Graph-Acceleration/Deceleration Graph" of catalog.
- 3)Needed, depends on speed and work load. Check "Speed-Work load Graph" on catalog.
- 4)The Z phase first detecting position from the stroke end of the motor side.
- 5)Refer to "Specifications table" of the catalog for electric specifications (motor and lock).
- 6)Please avoid loosen the screws for mounting of motor.
- 7)Switch rail is included as attachment, please mount switch rail after mounting actuator.
(Other wise switch rail will interfere body mounting holes.)
- 8)Switch rail can be used both (left and right) side. Please confirm the direction of the mounting.
- 9)There is the restriction of the coming out direction of the auto switch cable.
If the direction is wrong, the auto switch won't work correctly.
- 10)Auto switch is not included.
- 11)Unless otherwise noted along with a separate contract or agreement within the Product Specifications, the safety instructions specified in the product catalog are applied.
Please contact your local SMC Sales office for further details.

Electric actuator/Slider type