

# Air Cylinder/Non-rotating Rod Type: Double Acting

# CG1K-Z Series

ø20, ø25  
ø32, ø40  
ø50, ø63

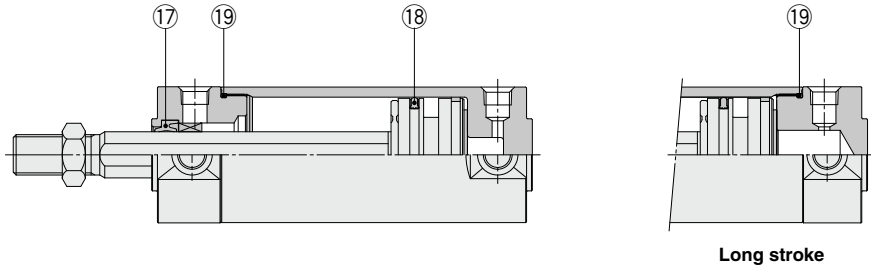
The Replacement Procedure is on p. 314

## Construction

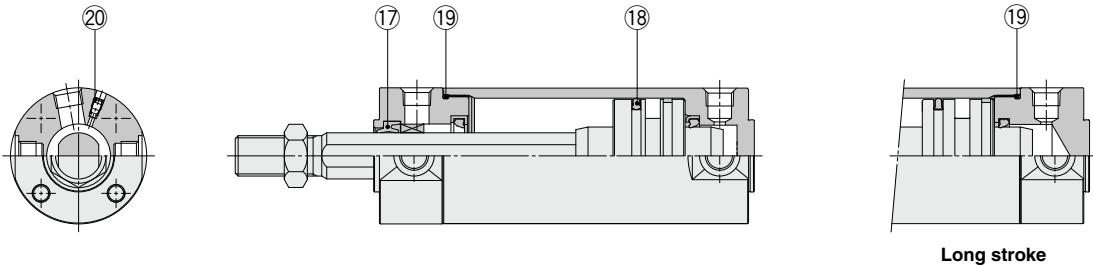
### With rubber bumper

The products in this series are refreshed products. Check the following before ordering.

- Previous series (Discontinued product) CG1K → p. 37
- Checking whether the cylinder is a new or a previous model → p. 563, 564



### With air cushion



\* The numbers correspond with those in the "Construction" of the CG1K-Z series in the Best Pneumatics catalog.

### Seal Kit List

No.	Description	Material	Note
17	Rod seal	NBR	20 is a non-replaceable part, so it is not included in the seal kit.
18	Piston seal		
19	Tube gasket		
20	Valve seal		

### Replacement Parts: Seal Kit

Bore size (mm)	Part no.	Contents
20	CG1KN20Z-PS	Set of nos. 17, 18, 19
25	CG1KN25Z-PS	
32	CG1KN32Z-PS	
40	CG1KN40Z-PS	

\* The seal kit includes a grease pack (10 g). Order with the following part number when only the grease pack is required.

Grease pack part no.: GR-S-010 (10 g)

### Disassembly/Replacement

## ⚠ Caution

#### 1. Do not replace the bushings.

The bushings are press-fit. To replace them, they must be replaced together with the cover assembly.

#### 2. To replace a seal, apply grease to the new seal before installing it.

If the cylinder is put into operation without applying grease to the seal, it could cause the seal to wear significantly, leading to premature air leakage.

#### 3. Cylinders with ø50 or larger bore sizes cannot be disassembled.

When disassembling cylinders with bore sizes ø20 through ø40, grip the double flat part of either the head cover or the rod cover with a vise and loosen the other side with a wrench or a monkey wrench, etc., and then remove the cover. When re-tightening, tighten approximately 2 degrees more than the original position.

(Cylinders with ø50 or larger bore sizes are tightened with a large tightening torque and cannot be disassembled. If disassembly is required, please contact SMC.)