

Made to Order Common Specifications: -XB14: Cylinder with Heat Resistant Auto Switch



10 Cylinder with Heat-resistant Auto Switch

Symbol
-XB14

A heat-resistant, compact cylinder which can mount a heat-resistant auto switch (Max. 150°C)

Applicable Series

Description	Model	Action	Note	Vol. no. (for std model)
Compact cylinder	CQ2	Double acting, Single rod	Applicable to ø16 to ø63 Excludes models with a rubber bumper Excludes the air-hydro type	Web Catalog

Specifications

Ambient and fluid temperature range	0 to 150°C
Seal material	Fluororubber
Grease	Heat-resistant grease
Min. stroke for auto switch mounting	15 (Same for both 1 pc. and 2 pcs.)
Specifications other than the above	Same as the standard type

For the detailed specifications of auto switches, refer to pages 1346 and 1347.

How to Order

Standard model no. - **M9NJL** - **XB14**

Symbol	Output
M9NJ	NPN
M9PJ	PNP
F7NJ	NPN

Number of auto switches

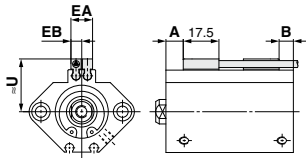
Cylinder with heat-resistant auto switch

* Lead wire length symbols
3 m L (Example) M9NJL
5 m Z (Example) M9NJZ

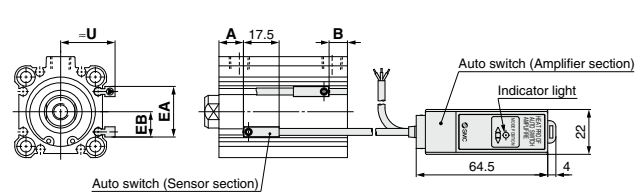
Auto Switch Proper Mounting Position (Detection at stroke end) and Mounting Height

D-M9□J

ø16 to ø25

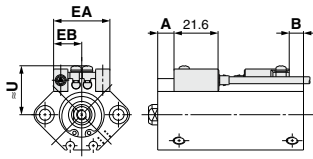


ø32 to ø63

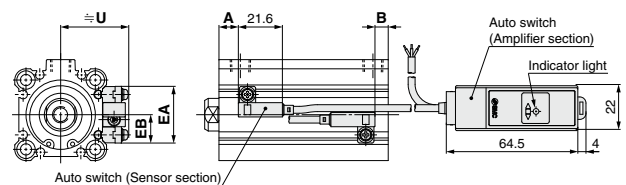


D-F7NJ

ø16 to ø25



ø32 to ø63



Auto switch model	D-M9□J								D-F7NJ							
	A	B	U	EA	EB	A	B	U	EA	EB	A	B	U	EA	EB	
16	9.5	7	21	11	5.5	8	5.5	22.5	28	14						
20	9.5	8.5	23.5	11	5.5	8	7	25.5	28	14						
25	9.5	9	27	11	5.5	8	7.5	28	28	14						
32	11	8	29	25	12.5	9.5	6.5	36	28	14						
40	15	10.5	31	30	15	13.5	9	38	33	16.5						
50	13	13.5	36	34	17	11.5	12	43.5	37	18.5						
63	15.5	16.5	41.5	43	21.5	14	15	48.5	46	23						

Operating Range

Auto switch model	Bore size [mm]									
	16	20	25	32	40	50	63			
D-M9□J	4.5	4.5	4.5	5	4.5	5	5			
D-F7NJ	4.5	4.5	4.5	5	4.5	5	5			

* Since the operating range is provided as a guideline at room temperature, it cannot be guaranteed. It may change substantially depending on the ambient environment.

Auto Switch Mounting Bracket Part Nos.

Auto switch model	Bore size [mm]				
	16	20	25	32	40 50 63
D-F7NJ(L)Z	BQ4-012			BQJ2-032	

Auto Switch Mounting Bracket Weight

Mounting bracket part no.	Weight [g]
BQ4-012	1.5
BQJ2-032	3.6

* Adjust the auto switch after confirming the operating conditions in the actual setting.

* The dimensions of the cylinder body are equivalent to those of the standard type, double acting, single rod of the CDQ2 series.

* Auto switches are shipped in the same package as the product but do not come assembled for protection purposes. Assemble them by referring to the A and B dimensions for mounting position shown above.

* The tightening torque for the auto switch mounting M2.5 screw is 0.25 to 0.35 N·m.