

Made to Order Common Specifications: -XB11: Long Stroke Type



The CY3B series is to be discontinued as of May 2025.
Please select the CY3B-Z series instead.

Symbol
-XB11

7 Long Stroke Type

Stroke which exceeds the standard stroke length

Applicable Series

Series	Description	Model	Type	Note	Vol. no. (for std model)
CX2	Slide unit	CX2	Slide bearing type		Web Catalog
CXW	Slide unit	CXWM	Slide bearing type		
		CXWL	Ball bushing bearing type		
CXSJ		CXSJ	Standard type	Except ø6, Axial type	
CXS	Dual rod cylinder	CXS ^{Note)}	Standard type		
		CXSW	Double rod type		
		CY3B-Z	Basic type		
CY	Magnetically coupled rodless cylinder	CY3B	Basic type		
		CY1H	Linear guide type		
		CY1F	Low profile guide type		
ML1	Hy-rodless cylinder	ML1C	Cam follower guide type		
REA	Sine rodless cylinder	REA	Basic type		
RSQ	Stopper cylinder/ Fixed mounting height	RSQ-Z	Double acting	Round bar type only	
		RSQ	Double acting	ø12, Round bar type only	

Note) The product with air cushion or with end lock for retraction side is available as a special order.

How to Order

Standard model no. **-XB11**

• Long stroke type

* Enter a symbol for stroke required.

Specifications: Same as standard type

* Refer to page 1459 for specifications and dimensions of the RSQ.

Stroke Range

Model	Bore size (mm)	Standard stroke (mm)	Long stroke (mm)	Model	Bore size (mm)	Standard stroke (mm)	Long stroke (mm)
CY3B (-Z)	25, 32	100 to 800	2001 to 3000 (ø25 to ø40)	CXSJ	10	10 to 75	80, 90, 100, 110, 120, 125, 150
	40, 50, 63	100 to 1000	2001 to 5000 (ø50, ø63)		15	10 to 100	110, 120, 125, 150
CY1H	10	100 to 300	301 to 500	CXS	20, 25, 32	10 to 100	110, 120, 125, 150, 175, 200
	15	100 to 500	501 to 750		10	10 to 75	80, 90, 100, 110, 120, 125, 150
	20	100 to 600	601 to 1000		15	10 to 100	110, 120, 125, 150
	25	100 to 800	801 to 1200		20, 25, 32	10 to 100	110, 120, 125, 150, 175, 200
CY1HT	25		1001 to 1200	CXSW	10, 15	10, 20, 30, 40, 50	75, 100, 125, 150
	32	100 to 1000	1001 to 1500		20, 25, 32	10, 20, 30, 40, 50, 75, 100	125, 150, 175, 200
CX2	15, 25	25 to 200	225, 250, 275, 300	ML1	25, 32, 40	100 to 1000	1001 to 2000
CXWM	16, 20, 25, 32	25 to 200	225, 250, 275, 300 (CXWM16 to 25)	REA	25, 32, 40, 50, 63	200 to 1000	2001 to 3000 (ø25, ø32, ø40)
225, 250 (CXWM32)			2001 to 5000 (ø50, ø63)				
225, 250, 275 (CXWL16 to 25)							
CXWL			225 (CXWL32)	RSQ	12	10	15, 20
				RSQ-Z	16	10, 15	20, 30
					20, 32	10, 15, 20	30, 40
					40, 50	20, 25, 30	40, 50

Made to Order Common Specifications: -XB11: Long Stroke Type

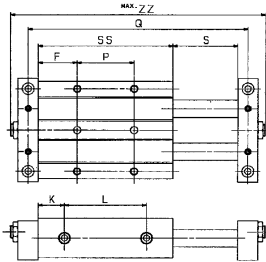


7 Long Stroke Type

Symbol
-XB11

Dimensions

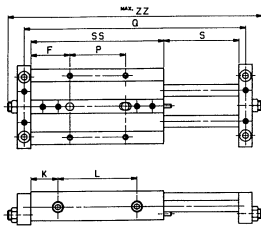
CX2 series: $\phi 15, \phi 25$



Model	F	L	K	P	Q	S	SS	Z	ZZ
CX2N15-225	89.5	238	15.5	90	506	227	269	496	528
CX2N15-250	102	263	15.5	90	556	252	294	546	578
CX2N15-275	114.5	288	15.5	90	606	277	319	596	628
CX2N15-300	127	313	15.5	90	656	302	344	646	678

Model	F	L	K	P	Q	S	SS	Z	ZZ
CX2N25-225	96	241	20.5	90	525	227	282	509	553
CX2N25-250	108.5	266	20.5	90	575	252	307	559	603
CX2N25-275	121	291	20.5	90	625	277	332	609	653
CX2N25-300	133.5	316	20.5	90	675	302	357	659	703

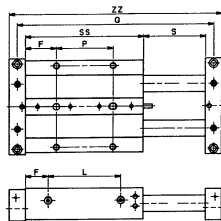
CXWM series: $\phi 16, \phi 25$



Model	F	L	K	P	Q	S	SS	Z	ZZ
CXWM16-225	92.5	238	18.5	90	514	227	275	502	538
CXWM16-250	105	263	18.5	90	564	252	300	552	588
CXWM16-275	117.5	288	18.5	90	614	277	325	602	638
CXWM16-300	130	313	18.5	90	664	302	350	652	688

Model	F	L	K	P	Q	S	SS	Z	ZZ
CXWM25-225	96	241	20.5	90	525	227	282	509	553
CXWM25-250	108.5	266	20.5	90	575	252	307	559	603
CXWM25-275	121	291	20.5	90	625	277	332	609	653
CXWM25-300	133.5	316	20.5	90	675	302	357	659	703

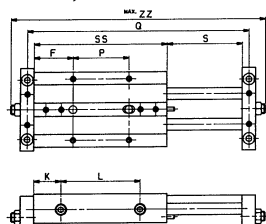
$\phi 20, \phi 32$



Model	F	L	K	P	Q	S	SS	Z	ZZ
CXWM20-225	94.5	239	20	90	520	227	279	506	534
CXWM20-250	107	264	20	90	570	252	304	556	584
CXWM20-275	119.5	289	20	90	620	277	329	606	634
CXWM20-300	132	314	20	90	670	302	354	656	684

Model	F	L	K	P	Q	S	SS	Z	ZZ
CXWM32-225	38	240	28	220	543	227	296	523	563
CXWM32-250	38	265	28	245	593	252	321	573	613

CXWL series: $\phi 16, \phi 25$



Model	F	L	K	P	Q	S	SS	Z	ZZ
CXWL16-225	115.5	239	41	90	560	227	321	548	584
CXWL16-250	128	264	41	90	610	252	346	598	634
CXWL16-275	140.5	289	41	90	660	277	371	648	684

Model	F	L	K	P	Q	S	SS	Z	ZZ
CXWL25-225	119	241	43.5	90	571	227	328	555	599
CXWL25-250	131.5	266	43.5	90	621	252	353	605	649
CXWL25-275	144	291	43.5	90	671	277	378	655	699

Made to Order Common Specifications: -XB11: Long Stroke Type

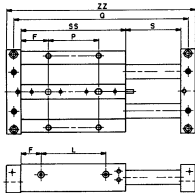


7 Long Stroke Type

Symbol
-XB11

Dimensions

CXWL series: $\varnothing 20$, $\varnothing 32$

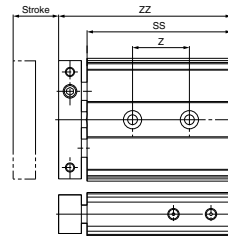
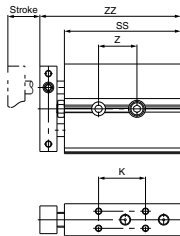


Model	F	L	K	P	Q	S	SS	Z	ZZ
CXWL20-225	116.5	239	42	90	564	227	323	550	578
CXWL20-250	129	264	42	90	614	252	348	600	628
CXWL20-275	141.5	289	42	90	664	277	373	650	678

Model	F	L	K	P	Q	S	SS	Z	ZZ
CXWL32-225	41	277	30	255	584	227	337	564	604

CXSJ_L^M series: $\varnothing 10$

CXSJ_L^M series: $\varnothing 15$, $\varnothing 20$, $\varnothing 25$, $\varnothing 32$

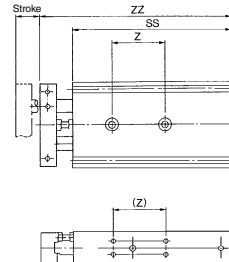
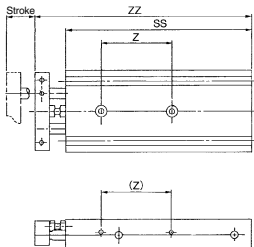


Model	CXSJ ^M $\varnothing 10$					CXSJ ^M $\varnothing 15$					CXSJ ^M $\varnothing 20$					CXSJ ^M $\varnothing 25$					CXSJ ^M $\varnothing 32$								
Stroke	80	90	100	110	120	125	150	110	120	125	150	110	120	125	150	175	200	110	120	125	150	175	200	110	120	125	150	175	200
SS	124.5	134.5	144.5	154.5	164.5	169.5	194.5	167.5	177.5	182.5	207.5	177.5	187.5	192.5	217.5	242.5	267.5	180.5	190.5	195.5	220.5	245.5	270.5	190.5	200.5	205.5	230.5	255.5	280.5
ZZ	136	146	156	166	176	181	206	180	190	195	220	194	204	209	234	259	284	197	207	212	237	262	287	210.5	220.5	225.5	250.5	275.5	300.5
Z	88	98	108	118	128	133	158	65	75			80	100					80	100					90					
K	92	102	112	122	132	137	162																						

Note 1) Dimensions of each model except SS, ZZ, Z and K on the above table are the same as standard type.

CXS_L^M series: $\varnothing 10$, $\varnothing 15$

CXS_L^M series: $\varnothing 20$, $\varnothing 25$, $\varnothing 32$



Model	CXS ^M $\varnothing 10$					CXS ^M $\varnothing 15$					CXS ^M $\varnothing 20$					CXS ^M $\varnothing 25$					CXS ^M $\varnothing 32$								
Stroke	80	90	100	110	120	125	150	110	120	125	150	110	120	125	150	175	200	110	120	125	150	175	200	110	120	125	150	175	200
SS	135	145	155	165	175	180	205	170	180	185	210	180	190	195	220	245	270	182	192	197	222	247	272	192	202	207	232	257	282
ZZ	152	162	172	182	192	197	222	189	199	204	229	204	214	219	244	269	294	206	216	221	246	271	296	222	232	237	262	287	312
Z	50	60				70	80	65	75			80						80						100					

Note 1) Dimensions of each model except SS, ZZ and Z on the above table are the same as standard type.

Note 2) For the external dimensions of the CXSW series double rod, refer to the standard type of CXSW.

Made to Order Common Specifications: -XB11: Long Stroke Type



7 Long Stroke Type

Symbol
-XB11

How to Order

For $\phi 12$

RS(D)Q Mounting bracket 12 - Stroke D - Auto switch Suffix -XB11
 • Refer to the below for specifications. • Long stroke type

For $\phi 16$ to $\phi 50$

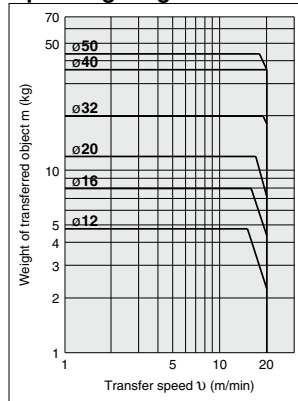
RS(D)Q Mounting bracket Bore size - Stroke DZ - Auto switch Suffix -XB11
 • Refer to the below for specifications. • Long stroke type

Specifications

Applicable series	RSQ
Action	Double acting
Rod end configuration	Round bar type
Stroke range	See below.
Operating range	See below.
Specifications other than above	Same as standard type

Model	Bore size (mm)	Standard stroke (mm)	Long stroke (mm)
RSQ	12	10	15, 20
	16	10, 15	20, 30
RSQ-Z	20, 32	10, 15, 20	30, 40
	40, 50	20, 25, 30	40, 50

Operating range



Dimensions (Dimensions other than below are the same as standard type.)

RS□QB12

